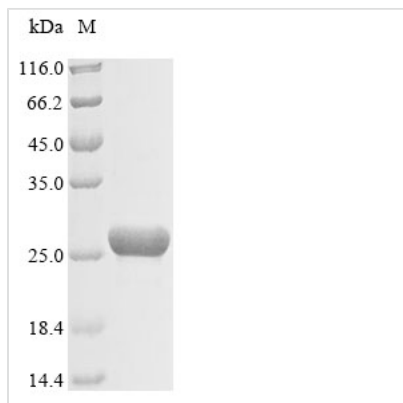




# Recombinant Rat Carbamoyl-phosphate synthase [ammonia], mitochondrial (Cps1), partial

<b>Product Code</b>	CSB-EP005913RA
<b>Abbreviation</b>	Recombinant Rat Cps1 protein, partial
<b>Storage</b>	The shelf life is related to many factors, storage state, buffer ingredients, storage temperature and the stability of the protein itself. Generally, the shelf life of liquid form is 6 months at -20°C/-80°C. The shelf life of lyophilized form is 12 months at -20°C/-80°C.
<b>Uniprot No.</b>	P07756
<b>Storage Buffer</b>	Tris-based buffer,50% glycerol
<b>Product Type</b>	Recombinant Proteins
<b>Immunogen Species</b>	Rattus norvegicus (Rat)
<b>Purity</b>	Greater than 85% as determined by SDS-PAGE.
<b>Sequence</b>	FKIPQKGILIGIQQSFRPRFLGVAEQLHNEGFKLFATEATSDWLNANNVPATPV AWPSQEGQNPSLSSIRKLIRDGSLDLVINLPNNNTKVFHDNYVIRRTAVDSGIAL LTNFQVTKLFAEAVQKARTVDSKSLFHRYRQYSAGKAA
<b>Research Area</b>	Signal Transduction
<b>Source</b>	E.coli
<b>Target Names</b>	Cps1
<b>Protein Names</b>	Recommended name: Carbamoyl-phosphate synthase [ammonia], mitochondrial EC= 6.3.4.16Alternative name(s): Carbamoyl-phosphate synthetase I Short name= CPSase I
<b>Expression Region</b>	1355-1500aa
<b>Notes</b>	Repeated freezing and thawing is not recommended. Store working aliquots at 4°C for up to one week.
<b>Tag Info</b>	N-terminal 10xHis-tagged and C-terminal Myc-tagged
<b>Mol. Weight</b>	23.7 kDa
<b>Protein Length</b>	partial
<b>Image</b>	



(Tris-Glycine gel) Discontinuous SDS-PAGE (reduced) with 5% enrichment gel and 15% separation gel.

### Shelf Life

The shelf life is related to many factors, storage state, buffer ingredients, storage temperature and the stability of the protein itself.

Generally, the shelf life of liquid form is 6 months at -20°C/-80°C. The shelf life of lyophilized form is 12 months at -20°C/-80°C.