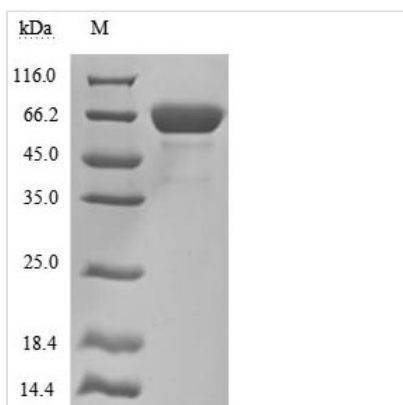


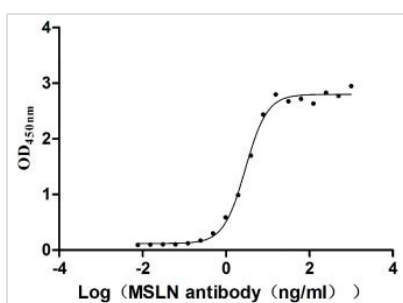


Recombinant Human Mesothelin (MSLN), partial (Active)

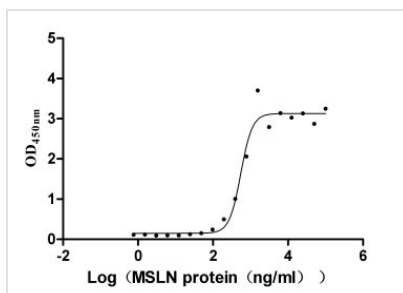
Product Code	CSB-MP015044HUc9
Relevance	Membrane-anchored forms may play a role in cellular adhesion. Megakaryocyte-potentiating factor (MPF) potentiates megakaryocyte colony formation in vitro.
Abbreviation	Recombinant Human MSLN protein, partial (Active)
Storage	The shelf life is related to many factors, storage state, buffer ingredients, storage temperature and the stability of the protein itself. Generally, the shelf life of liquid form is 6 months at -20°C/-80°C. The shelf life of lyophilized form is 12 months at -20°C/-80°C.
Uniprot No.	Q13421
Storage Buffer	Lyophilized from a 0.2 µm filtered PBS, 6% Trehalose, pH 7.4
Product Type	Others
Immunogen Species	Homo sapiens (Human)
Biological Activity	Measured by its binding ability in a functional ELISA. Immobilized MSLN at 2 µg/ml can bind Anti-MSLN rabbit monoclonal antibody, the EC ₅₀ of the MSLN protein is 2.657-3.177 ng/ml.②Measured by its binding ability in a functional ELISA. Immobilized MUC16(CSB-MP704410HU3c7) at 10 µg/ml can bind MSLN, the EC ₅₀ is 460.7-662.2 ng/ml.
Purity	Greater than 90% as determined by SDS-PAGE.
Sequence	EVEKTACPSGKKAREIDESLIFYKKWELEACVDAALLATQMDRVNAIPFTYEQL DVLKHKLDELYPQGYPESVIQHLGYLFLKMSPEDIRKWNVTSLETLKALLEVVK GHEMSPQVATLIDRFVKGRGQLDKDLDLTAFYPGYLCSLSPEELSSVPPSSI WAVRPQDLDTCDPRQLDVLYPKARLAFQNMNGSEYFVKIQSFLGGAPTEDLK ALSQQNVSMDLATFMKLRTDAVLPLTVAEVQKLLGPHVEGLKAEERHRPVRD WILRQRQDDLDTLGLGLQG
Research Area	Cancer
Source	Mammalian cell
Target Names	MSLN
Expression Region	296-580aa
Notes	Repeated freezing and thawing is not recommended. Store working aliquots at 4°C for up to one week.
Tag Info	N-terminal hFc-tagged
Mol. Weight	59.6 kDa
Protein Length	Partial of isoform 3
Image	



(Tris-Glycine gel) Discontinuous SDS-PAGE (reduced) with 5% enrichment gel and 15% separation gel.



Activity
 Measured by its binding ability in a functional ELISA. Immobilized MSLN at 2 µg/ml can bind Anti-MSLN rabbit monoclonal antibody, the EC₅₀ of the MSLN protein is 2.657-3.177 ng/ml.



Activity
 Measured by its binding ability in a functional ELISA. Immobilized MUC16(CSB-MP704410HU3c7) at 10 µg/ml can bind MSLN, the EC₅₀ is 460.7-662.2 ng/ml.

Endotoxin

Less than 1.0 EU/ug as determined by LAL method.

Shelf Life

The shelf life is related to many factors, storage state, buffer ingredients, storage temperature and the stability of the protein itself. Generally, the shelf life of liquid form is 6 months at -20°C/-80°C. The shelf life of lyophilized form is 12 months at -20°C/-80°C.