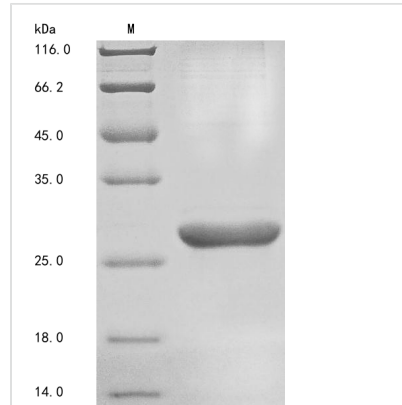




Recombinant Human Basement membrane-specific heparan sulfate proteoglycan core protein (HSPG2), partial

Product Code	CSB-BP010868HU
Abbreviation	Recombinant Human HSPG2 protein, partial
Storage	The shelf life is related to many factors, storage state, buffer ingredients, storage temperature and the stability of the protein itself. Generally, the shelf life of liquid form is 6 months at -20°C/-80°C. The shelf life of lyophilized form is 12 months at -20°C/-80°C.
Uniprot No.	P98160
Product Type	Recombinant Proteins
Immunogen Species	Homo sapiens (Human)
Purity	Greater than 85% as determined by SDS-PAGE.
Sequence	DAPGQYGAYFHDDGFLAFPGHVFSTRSLPEVPETIELEVRTSTASGLLLWQGVE VGEAGQGKDFISLGLQDGHVFRYQLGSGEARLVSEDPINDGEWHRVTALRE GRRGSIQVDGEELVSGRSPGPNVAVNAKGSVYIGGAPDVATLTGGRFSSGIT GCVKNLVLHSARPGAPPPQPLDLQHRAQAGANTRPCPS
Research Area	Cancer
Source	Baculovirus
Target Names	HSPG2
Protein Names	Recommended name: Basement membrane-specific heparan sulfate proteoglycan core protein Short name= HSPG2 Alternative name(s): Perlecan Short name= PLCCleaved into the following 2 chains: 1. Endorepellin 2. LG3 peptide
Expression Region	4197-4391aa
Notes	Repeated freezing and thawing is not recommended. Store working aliquots at 4°C for up to one week.
Tag Info	N-terminal 10xHis-tagged and C-terminal Myc-tagged
Mol. Weight	24.4
Protein Length	Partial
Image	



(Tris-Glycine gel) Discontinuous SDS-PAGE (reduced) with 5% enrichment gel and 15% separation gel.

Shelf Life

The shelf life is related to many factors, storage state, buffer ingredients, storage temperature and the stability of the protein itself.

Generally, the shelf life of liquid form is 6 months at -20°C/-80°C. The shelf life of lyophilized form is 12 months at -20°C/-80°C.