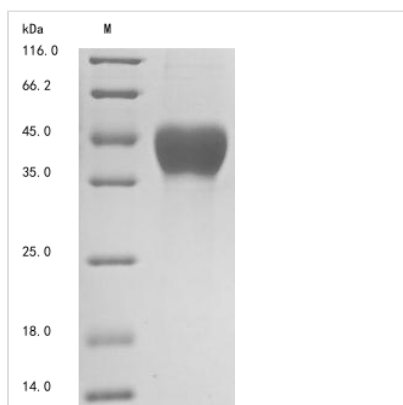




Recombinant Human Mesothelin (MSLN), partial

Product Code	CSB-MP015044HUf3
Abbreviation	Recombinant Human MSLN protein, partial
Storage	The shelf life is related to many factors, storage state, buffer ingredients, storage temperature and the stability of the protein itself. Generally, the shelf life of liquid form is 6 months at -20°C/-80°C. The shelf life of lyophilized form is 12 months at -20°C/-80°C.
Uniprot No.	Q13421
Product Type	Recombinant Proteins
Immunogen Species	Homo sapiens (Human)
Purity	Greater than 90% as determined by SDS-PAGE.
Sequence	EVEKTACPSGKKKAREIDESLIFYKKWELEACVDAALLATQMDRVNAIPFTYEQL DVLKHKLDELYPQGYPEVSIQHLGYLFLKMSPEDIRKWNVTSLETLKALLEVVK GHEMSPQVATLIDRFVKGRGQLDKDTLDTAFYPGYLCSLSPEELSSVPPSSI WAVRPQDLDTCDPRQLDVLYPKARLAFQNMNGSEYFVKIQSFLGGAPTEDLK ALSQQNVSMDLATFMKLR TDAVLPLTVAEVQKLLGPHVEGLKAEERHRPVRD WILRQRQDDLDLTLGLGLQG
Research Area	Cancer?
Source	Mammalian cell
Target Names	MSLN
Expression Region	296-580aa
Notes	Repeated freezing and thawing is not recommended. Store working aliquots at 4°C for up to one week.
Tag Info	C-terminal 6xHis-Myc-tagged
Mol. Weight	36.7
Protein Length	partial of isoform 3

Image



(Tris-Glycine gel) Discontinuous SDS-PAGE (reduced) with 5% enrichment gel and 15% separation gel.

Shelf Life

The shelf life is related to many factors, storage state, buffer ingredients,



storage temperature and the stability of the protein itself.
Generally, the shelf life of liquid form is 6 months at -20°C/-80°C. The shelf life of lyophilized form is 12 months at -20°C/-80°C.