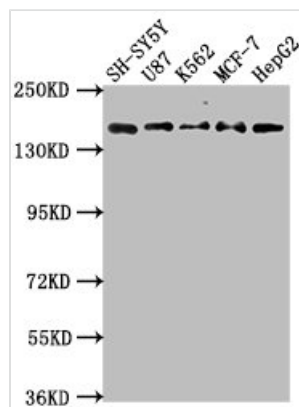




INSRR Antibody

Product Code	CSB-PA011755LA01HU
Storage	Upon receipt, store at -20°C or -80°C. Avoid repeated freeze.
Uniprot No.	P14616
Immunogen	Recombinant Human Insulin receptor-related protein (747-921AA)
Raised In	Rabbit
Species Reactivity	Human
Tested Applications	ELISA, WB, IHC; Recommended dilution: WB:1:1000-1:5000, IHC:1:200-1:500
Form	Liquid
Conjugate	Non-conjugated
Storage Buffer	Preservative: 0.03% Proclin 300 Constituents: 50% Glycerol, 0.01M PBS, pH 7.4
Purification Method	>95%, Antigen Affinity purified & Affinity purified
Isotype	IgG
Clonality	Polyclonal
Alias	Insulin receptor-related protein (IRR) (EC 2.7.10.1) (IR-related receptor) [Cleaved into: Insulin receptor-related protein alpha chain, Insulin receptor-related protein beta chain], INSRR, IRR
Immunogen Species	Homo sapiens (Human)
Research Area	Signal Transduction
Target Names	INSRR

Image



Western Blot

Positive WB detected in: SH-SY5Y whole cell lysate, U87 whole cell lysate, K562 whole cell lysate, MCF-7 whole cell lysate, HepG2 whole cell lysate

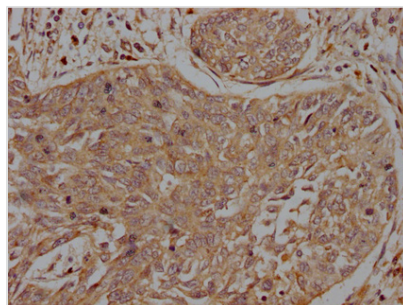
All lanes: INSRR antibody at 1:2000

Secondary

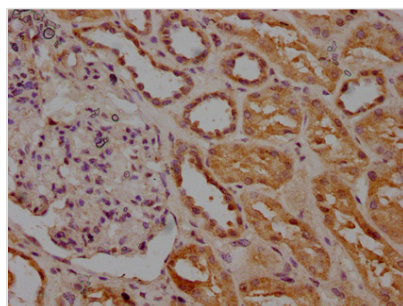
Goat polyclonal to rabbit IgG at 1/50000 dilution

Predicted band size: 144 kDa

Observed band size: 144 kDa



IHC image of CSB-PA011755LA01HU diluted at 1:200 and staining in paraffin-embedded human cervical cancer performed on a Leica Bond™ system. After dewaxing and hydration, antigen retrieval was mediated by high pressure in a citrate buffer (pH 6.0). Section was blocked with 10% normal goat serum 30min at RT. Then primary antibody (1% BSA) was incubated at 4°C overnight. The primary is detected by a biotinylated secondary antibody and visualized using an HRP conjugated SP system.



IHC image of CSB-PA011755LA01HU diluted at 1:200 and staining in paraffin-embedded human kidney tissue performed on a Leica Bond™ system. After dewaxing and hydration, antigen retrieval was mediated by high pressure in a citrate buffer (pH 6.0). Section was blocked with 10% normal goat serum 30min at RT. Then primary antibody (1% BSA) was incubated at 4°C overnight. The primary is detected by a biotinylated secondary antibody and visualized using an HRP conjugated SP system.