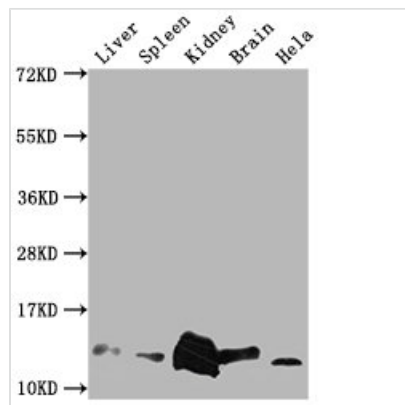




Mif Antibody

Product Code	CSB-PA013826LA01MO
Storage	Upon receipt, store at -20°C or -80°C. Avoid repeated freeze.
Uniprot No.	P34884
Immunogen	Recombinant Mouse Macrophage migration inhibitory factor protein (2-115AA)
Raised In	Rabbit
Species Reactivity	Mouse
Tested Applications	ELISA, WB; Recommended dilution: WB:1:1000-1:5000
Form	Liquid
Conjugate	Non-conjugated
Storage Buffer	Preservative: 0.03% Proclin 300 Constituents: 50% Glycerol, 0.01M PBS, pH 7.4
Purification Method	>95%, Antigen Affinity purified & Affinity purified
Isotype	IgG
Clonality	Polyclonal
Alias	Macrophage migration inhibitory factor (MIF) (EC 5.3.2.1) (Delayed early response protein 6) (DER6) (Glycosylation-inhibiting factor) (GIF) (L-dopachrome isomerase) (L-dopachrome tautomerase) (EC 5.3.3.12) (Phenylpyruvate tautomerase), Mif
Immunogen Species	Mus musculus (Mouse)
Research Area	Cardiovascular
Target Names	Mif

Image



Western Blot

Positive WB detected in: Mouse Liver tissue, Mouse Spleen tissue, Mouse kidney tissue, Mouse Brain tissue, HeLa whole cell lysate
All lanes: Mif antibody at 1:2000

Secondary

Goat polyclonal to rabbit IgG at 1/50000 dilution
Predicted band size: 13 kDa
Observed band size: 13 kDa

Usage

For Research Use Only. Not for use in diagnostic or therapeutic procedures.