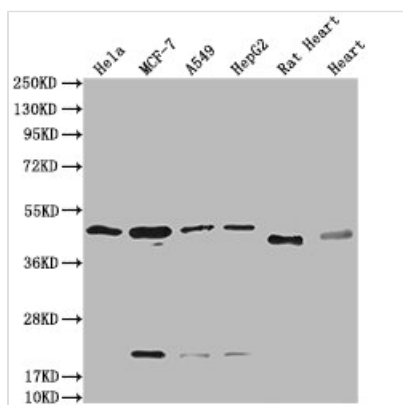




# HTR3E Antibody

|                            |   |
|----------------------------|---|
| <b>Product Code</b>        | CSB-PA010894LA01HU  |
| <b>Storage</b>             | Upon receipt, store at -20°C or -80°C. Avoid repeated freeze.                     |
| <b>Uniprot No.</b>         | A5X5Y0  |
| <b>Immunogen</b>           | Recombinant Human 5-hydroxytryptamine receptor 3E protein (26-248AA)              |
| <b>Raised In</b>           | Rabbit  |
| <b>Species Reactivity</b>  | Human   |
| <b>Tested Applications</b> | ELISA, WB; Recommended dilution: WB:1:1000-1:5000                                 |
| <b>Form</b>                | Liquid  |
| <b>Conjugate</b>           | Non-conjugated  |
| <b>Storage Buffer</b>      | Preservative: 0.03% Proclin 300<br>Constituents: 50% Glycerol, 0.01M PBS, pH 7.4  |
| <b>Purification Method</b> | >95%, Antigen Affinity purified & Affinity purified                               |
| <b>Isotype</b>             | IgG   |
| <b>Clonality</b>           | Polyclonal  |
| <b>Alias</b>               | 5-hydroxytryptamine receptor 3E (5-HT3-E) (5-HT3E) (Serotonin receptor 3E), HTR3E |
| <b>Immunogen Species</b>   | Homo sapiens (Human)  |
| <b>Research Area</b>       | Others  |
| <b>Target Names</b>        | HTR3E   |

## Image



### Western Blot

Positive WB detected in: HeLa whole cell lysate, MCF-7 whole cell lysate, A549 whole cell lysate, HepG2 whole cell lysate, Rat Heart tissue, Mouse Heart tissue

All lanes: HTR3E antibody at 1:2000

### Secondary

Goat polyclonal to rabbit IgG at 1/50000 dilution

Predicted band size: 52, 50, 53, 51, 54 kDa

Observed band size: 50 kDa

## Usage

For Research Use Only. Not for use in diagnostic or therapeutic procedures.