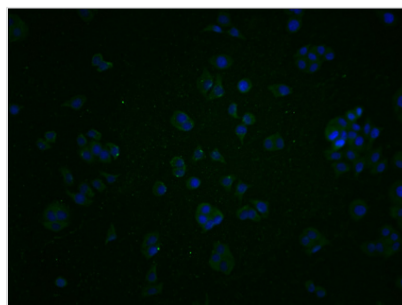




KCNK15 Antibody

Product Code	CSB-PA867147LA01HU
Storage	Upon receipt, store at -20°C or -80°C. Avoid repeated freeze.
Uniprot No.	Q9H427
Immunogen	Recombinant Human Potassium channel subfamily K member 15 protein (244-330AA)
Raised In	Rabbit
Species Reactivity	Human
Tested Applications	ELISA, IF; Recommended dilution: IF:1:200-1:500
Form	Liquid
Conjugate	Non-conjugated
Storage Buffer	Preservative: 0.03% Proclin 300 Constituents: 50% Glycerol, 0.01M PBS, pH 7.4
Purification Method	>95%, Antigen Affinity purified & Affinity purified
Isotype	IgG
Clonality	Polyclonal
Alias	Potassium channel subfamily K member 15 (Acid-sensitive potassium channel protein TASK-5) (TWIK-related acid-sensitive K(+) channel 5) (Two pore potassium channel KT3.3) (Two pore K(+) channel KT3.3), KCNK15, TASK5
Immunogen Species	Homo sapiens (Human)
Research Area	Signal Transduction
Target Names	KCNK15

Image



Immunofluorescence staining of PC3 cells with CSB-PA867147LA01HU at 1:200, counter-stained with DAPI. The cells were fixed in 4% formaldehyde and blocked in 10% normal Goat Serum. The cells were then incubated with the antibody overnight at 4°C. The secondary antibody was Alexa Fluor 488-conjugated AffiniPure Goat Anti-Rabbit IgG(H+L).

Usage For Research Use Only. Not for use in diagnostic or therapeutic procedures.