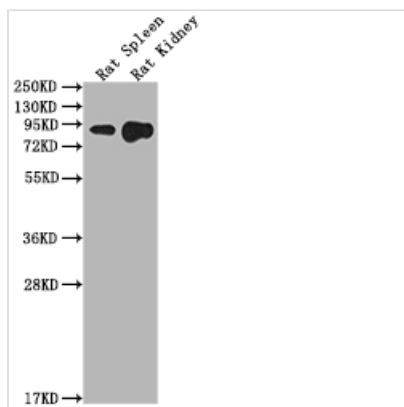




# Ace2 Antibody

<b>Product Code</b>	CSB-PA688690OA01RA
<b>Storage</b>	Upon receipt, store at -20°C or -80°C. Avoid repeated freeze.
<b>Uniprot No.</b>	Q5EGZ1
<b>Immunogen</b>	Peptide sequence from Rat Ace2 protein (105-118AA)
<b>Raised In</b>	Rabbit
<b>Species Reactivity</b>	Rat
<b>Tested Applications</b>	ELISA, WB; Recommended dilution: WB:1:1000-1:5000
<b>Form</b>	Liquid
<b>Conjugate</b>	Non-conjugated
<b>Storage Buffer</b>	Preservative: 0.03% Proclin 300 Constituents: 50% Glycerol, 0.01M PBS, PH 7.4
<b>Purification Method</b>	>95%, Antigen Affinity purified & Affinity purified
<b>Isotype</b>	IgG
<b>Clonality</b>	Polyclonal
<b>Alias</b>	Angiotensin-converting enzyme 2 (EC 3.4.17.23) (ACE-related carboxypeptidase) [Cleaved into: Processed angiotensin-converting enzyme 2], Ace2
<b>Immunogen Species</b>	Rattus norvegicus (Rat)
<b>Research Area</b>	Signal Transduction
<b>Target Names</b>	Ace2

## Image



### Western Blot

Positive WB detected in: Rat Spleen tissue, Rat Kidney tissue

All lanes: Ace2 antibody at 1:2000

Secondary

Goat polyclonal to rabbit IgG at 1/50000 dilution

Predicted band size: 93 kDa

Observed band size: 93 kDa

## Usage

For Research Use Only. Not for use in diagnostic or therapeutic procedures.