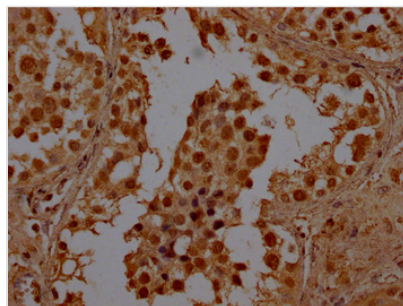




# BHLHE23 Antibody

<b>Product Code</b>	CSB-PA850867LA01HU
<b>Storage</b>	Upon receipt, store at -20°C or -80°C. Avoid repeated freeze.
<b>Uniprot No.</b>	Q8NDY6
<b>Immunogen</b>	Recombinant Human Class E basic helix-loop-helix protein 23 protein (1-225AA)
<b>Raised In</b>	Rabbit
<b>Species Reactivity</b>	Human
<b>Tested Applications</b>	ELISA, IHC; Recommended dilution: IHC:1:100-1:500
<b>Form</b>	Liquid
<b>Conjugate</b>	Non-conjugated
<b>Storage Buffer</b>	Preservative: 0.03% Proclin 300 Constituents: 50% Glycerol, 0.01M PBS, PH 7.4
<b>Purification Method</b>	Antigen Affinity Purified
<b>Isotype</b>	IgG
<b>Clonality</b>	Polyclonal
<b>Alias</b>	Class E basic helix-loop-helix protein 23 (bHLHe23) (Class B basic helix-loop-helix protein 4) (bHLHb4), BHLHE23, BHLHB4
<b>Immunogen Species</b>	Homo sapiens (Human)
<b>Research Area</b>	Signal Transduction
<b>Target Names</b>	BHLHE23

## Image



IHC image of CSB-PA850867LA01HU diluted at 1:100 and staining in paraffin-embedded human testis tissue performed on a Leica Bond<sup>TM</sup> system. After dewaxing and hydration, antigen retrieval was mediated by high pressure in a citrate buffer (pH 6.0). Section was blocked with 10% normal goat serum 30min at RT. Then primary antibody (1% BSA) was incubated at 4°C overnight. The primary is detected by a Goat anti-rabbit polymer IgG labeled by HRP and visualized using 0.05% DAB.

## Usage

For Research Use Only. Not for use in diagnostic or therapeutic procedures.