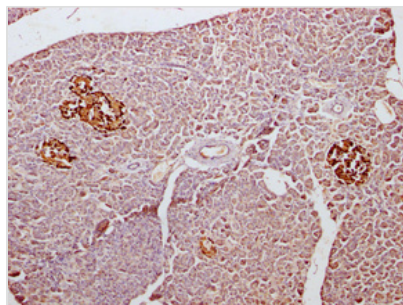




# GCG Antibody

<b>Product Code</b>	CSB-PA009315LA11HU
<b>Storage</b>	Upon receipt, store at -20°C or -80°C. Avoid repeated freeze.
<b>Uniprot No.</b>	P01275
<b>Immunogen</b>	Recombinant Human Glucagon protein (21-180AA)
<b>Raised In</b>	Rabbit
<b>Species Reactivity</b>	Human
<b>Tested Applications</b>	ELISA, IHC; Recommended dilution: IHC:1:200-1:500
<b>Form</b>	Liquid
<b>Conjugate</b>	Non-conjugated
<b>Storage Buffer</b>	Preservative: 0.03% Proclin 300 Constituents: 50% Glycerol, 0.01M PBS, PH 7.4
<b>Purification Method</b>	>95%, Protein G purified
<b>Isotype</b>	IgG
<b>Clonality</b>	Polyclonal
<b>Alias</b>	Glucagon [Cleaved into: Glicentin, Glicentin-related polypeptide (GRPP), Oxyntomodulin (OXM) (OXY), Glucagon, Glucagon-like peptide 1 (GLP-1) (Incretin hormone), Glucagon-like peptide 1(7-37) (GLP-1(7-37)), Glucagon-like peptide 1(7-36) (GLP-1(7-36)), Glucagon-like peptide 2 (GLP-2)], GCG
<b>Immunogen Species</b>	Homo sapiens (Human)
<b>Research Area</b>	Signal Transduction
<b>Target Names</b>	GCG

## Image



IHC image of CSB-PA009315LA11HU diluted at 1:300 and staining in paraffin-embedded human pancreatic tissue performed on a Leica Bond™ system. After dewaxing and hydration, antigen retrieval was mediated by high pressure in a citrate buffer (pH 6.0). Section was blocked with 10% normal goat serum 30min at RT. Then primary antibody (1% BSA) was incubated at 4°C overnight. The primary is detected by a Goat anti-rabbit polymer IgG labeled by HRP and visualized using 0.05% DAB.

**Usage** For Research Use Only. Not for use in diagnostic or therapeutic procedures.