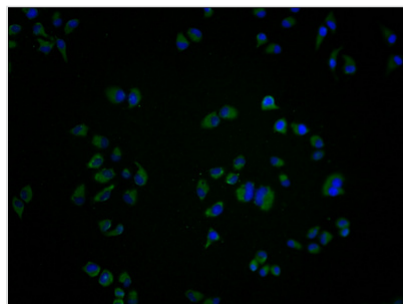




GRK7 Antibody

Product Code	CSB-PA009929LA11HU
Storage	Upon receipt, store at -20°C or -80°C. Avoid repeated freeze.
Uniprot No.	Q8WTQ7
Immunogen	Recombinant Human Rhodopsin kinase protein (342-550AA)
Raised In	Rabbit
Species Reactivity	Human
Tested Applications	ELISA, IF; Recommended dilution: IF:1:100-1:500
Form	Liquid
Conjugate	Non-conjugated
Storage Buffer	Preservative: 0.03% Proclin 300 Constituents: 50% Glycerol, 0.01M PBS, PH 7.4
Purification Method	Antigen Affinity Purified
Isotype	IgG
Clonality	Polyclonal
Alias	Rhodopsin kinase (EC 2.7.11.14) (G protein-coupled receptor kinase 7) (G protein-coupled receptor kinase GRK7), GRK7, GPRK7
Immunogen Species	Homo sapiens (Human)
Research Area	Signal Transduction
Target Names	GRK7

Image



Immunofluorescence staining of HeLa cells with CSB-PA009929LA11HU at 1:100, counter-stained with DAPI. The cells were fixed in 4% formaldehyde and blocked in 10% normal Goat Serum. The cells were then incubated with the antibody overnight at 4°C. The secondary antibody was Alexa Fluor 488-conjugated AffiniPure Goat Anti-Rabbit IgG(H+L).

Usage

For Research Use Only. Not for use in diagnostic or therapeutic procedures.