



HTN3 Antibody

Product Code	CSB-PA010879NA01HU
Storage	Upon receipt, store at -20°C or -80°C. Avoid repeated freeze.
Uniprot No.	P15516
Immunogen	Peptide sequence from Human Histatin-3 protein (20-34AA)
Raised In	Rabbit
Species Reactivity	Human
Tested Applications	ELISA, IHC; Recommended dilution: IHC:1:100-1:500
Form	Liquid
Conjugate	Non-conjugated
Storage Buffer	Preservative: 0.03% Proclin 300 Constituents: 50% Glycerol, 0.01M PBS, PH 7.4
Purification Method	>95%, Antigen Affinity purified & Affinity purified
Isotype	IgG
Clonality	Polyclonal
Alias	Histatin-3 (Basic histidine-rich protein) (Hst) (Histidine-rich protein 3) (PB) [Cleaved into: Histatin-3, His3-(20-44)-peptide (His3 20/44) (His3-(1-25)-peptide) (His3 1/25) (Histatin-3 1/25) (Histatin-6), His3-(20-43)-peptide (His3 20/43) (His3-(1-24)-peptide) (His3 1/24) (Histatin-3 1/24) (Histatin-5), His3-(20-32)-peptide (His3 20/32) (His3-(1-13)-peptide) (His3 1/13) (Histatin-3 1/13), His3-(20-31)-peptide (His3 20/31) (His3-(1-12)-peptide) (His3 1/12) (Histatin-3 1/12), His3-(20-30)-peptide (His3 20/30) (His3-(1-11)-peptide) (His3 1/11) (Histatin-3 1/11), His3-(24-32)-peptide (His3 24/32) (His3-(5-13)-peptide) (His3 5/13) (Histatin-3 5/13), His3-(24-31)-peptide (His3 24/31) (His3-(5-12)-peptide) (His3 5/12) (Histatin-11) (Histatin-3 5/12), His3-(24-30)-peptide (His3 24/30) (His3-(5-11)-peptide) (His3 5/11) (Histatin-12) (Histatin-3 5/11), His3-(25-32)-peptide (His3 25/32) (His3-(6-13)-peptide) (His3 6/13) (Histatin-3 6/13), His3-(25-30)-peptide (His3 25/30) (His3-(6-11)-peptide) (His3 6/11) (Histatin-3 6/11), His3-(26-32)-peptide (His3 26/32) (His3-(7-13)-peptide) (His3 7/13) (Histatin-3 7/13), His3-(26-31)-peptide (His3 26/31) (His3-(7-12)-peptide) (His3 7/12) (Histatin-3 7/12), His3-(26-30)-peptide (His3 26/30) (His3-(7-11)-peptide) (His3 7/11) (Histatin-3 7/11), His3-(31-51)-peptide (His3 31/51) (His3-(12-32)-peptide) (His3 12/32) (Histatin-3 12/32) (Histatin-4), His3-(31-44)-peptide (His3 31/44) (His3-(12-25)-peptide) (His3 12/25) (Histatin-3 12/25) (Histatin-9), His3-(31-43)-peptide (His3 31/43) (His3-(12-24)-peptide) (His3 12/24) (Histatin-3 12/24) (Histatin-7), His3-(32-44)-peptide (His3 32/44) (His3-(13-25)-peptide) (His3 13/25) (Histatin-10) (Histatin-3 13/25), His3-(32-43)-peptide (His3 32/43) (His3-(13-24)-peptide) (His3 13/24) (Histatin-3 13/24) (Histatin-8), His3-(33-44)-peptide (His3 33/44) (His3-(14-25)-peptide) (His3 14/25) (Histatin-3 14/25), His3-(33-43)-peptide (His3 33/43) (His3-(14-24)-peptide) (His3 14/24) (Histatin-3 14/24), His3-(34-44)-peptide (His3 34/44) (His3-(15-25)-peptide) (His3 15/25)



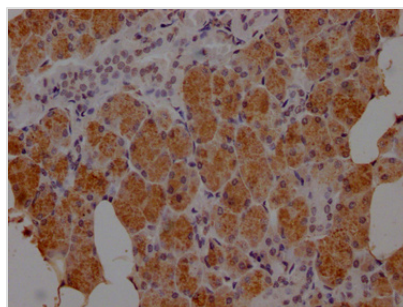
(Histatin-3 15/25), His3-(34-43)-peptide (His3 34/43) (His3-(15-24)-peptide) (His3 15/24) (Histatin-3 15/24), His3-(45-51)-peptide (His3 45/51) (His3-(26-32)-peptide) (His3 26/32) (Histatin-3 26/32), His3-(47-51)-peptide (His3 47/51) (His3-(28-32)-peptide) (His3 28/32) (Histatin-3 28/32), His3-(48-51)-peptide (His3 48/51) (His3-(29-32)-peptide) (His3 29/32) (Histatin-3 29/32)], HTN3, HIS2

Immunogen Species Homo sapiens (Human)

Research Area Signal Transduction

Target Names HTN3

Image



IHC image of CSB-PA010879NA01HU diluted at 1:100 and staining in paraffin-embedded human salivary gland tissue performed on a Leica BondTM system. After dewaxing and hydration, antigen retrieval was mediated by high pressure in a citrate buffer (pH 6.0). Section was blocked with 10% normal goat serum 30min at RT. Then primary antibody (1% BSA) was incubated at 4°C overnight. The primary is detected by a Goat anti-rabbit IgG labeled by HRP and visualized using 0.05% DAB.

Usage For Research Use Only. Not for use in diagnostic or therapeutic procedures.