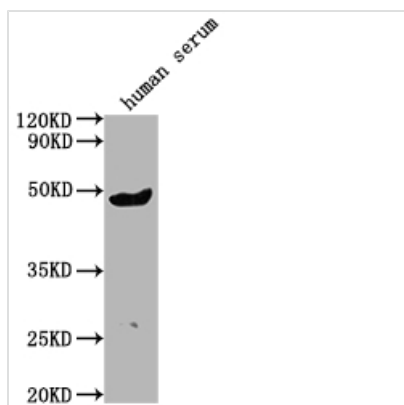




# IGHG3 Antibody

<b>Product Code</b>	CSB-PA011158OA01HU
<b>Storage</b>	Upon receipt, store at -20°C or -80°C. Avoid repeated freeze.
<b>Uniprot No.</b>	P01860
<b>Immunogen</b>	Peptide sequence from Human Immunoglobulin heavy constant gamma 3 protein (312-324AA)
<b>Raised In</b>	Rabbit
<b>Species Reactivity</b>	Human
<b>Tested Applications</b>	ELISA, WB; Recommended dilution: WB:1:1000-1:5000
<b>Form</b>	Liquid
<b>Conjugate</b>	Non-conjugated
<b>Storage Buffer</b>	Preservative: 0.03% Proclin 300 Constituents: 50% Glycerol, 0.01M PBS, PH 7.4
<b>Purification Method</b>	>95%, Protein G purified
<b>Isotype</b>	IgG
<b>Clonality</b>	Polyclonal
<b>Alias</b>	Immunoglobulin heavy constant gamma 3 (HDC) (Heavy chain disease protein) (Ig gamma-3 chain C region), IGHG3
<b>Immunogen Species</b>	Homo sapiens (Human)
<b>Research Area</b>	Signal Transduction
<b>Target Names</b>	IGHG3

## Image



### Western Blot

Positive WB detected in human serum

All lanes: IGHG3 antibody at 1:2000

Secondary

Goat polyclonal to rabbit IgG at 1/50000 dilution

Predicted band size: 42 kDa

Observed band size: 42 kDa

## Usage

For Research Use Only. Not for use in diagnostic or therapeutic procedures.