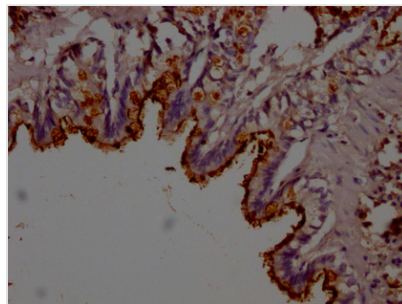




Lcn2 Antibody

Product Code	CSB-PA012816LA01RA
Storage	Upon receipt, store at -20°C or -80°C. Avoid repeated freeze.
Uniprot No.	P30152
Immunogen	Recombinant Rat Lcn2 protein (1-198AA)
Raised In	Rabbit
Species Reactivity	Rat
Tested Applications	ELISA, IHC; Recommended dilution: IHC:1:100-1:500
Form	Liquid
Conjugate	Non-conjugated
Storage Buffer	Preservative: 0.03% Proclin 300 Constituents: 50% Glycerol, 0.01M PBS, PH 7.4
Purification Method	Antigen Affinity Purified
Isotype	IgG
Clonality	Polyclonal
Alias	Neutrophil gelatinase-associated lipocalin (NGAL) (Alpha-2-microglobulin-related protein) (Alpha-2U globulin-related protein) (Lipocalin-2) (Siderocalin LCN2) (p25), Lcn2
Immunogen Species	Rattus norvegicus (Rat)
Research Area	Cardiovascular
Target Names	Lcn2

Image



IHC image of CSB-PA012816LA01RA diluted at 1:200 and staining in paraffin-embedded rat lung tissue performed on a Leica Bond™ system. After dewaxing and hydration, antigen retrieval was mediated by high pressure in a citrate buffer (pH 6.0). Section was blocked with 10% normal goat serum 30min at RT. Then primary antibody (1% BSA) was incubated at 4°C overnight. The primary is detected by a Goat anti-rabbit polymer IgG labeled by HRP and visualized using 0.05% DAB.