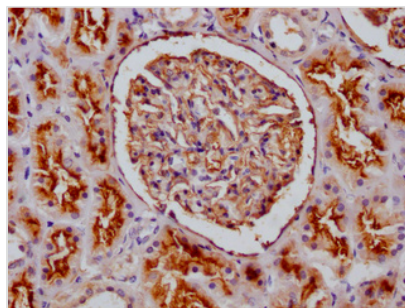




MME Antibody

Product Code	CSB-PA014653LA01HU
Storage	Upon receipt, store at -20°C or -80°C. Avoid repeated freeze.
Uniprot No.	P08473
Immunogen	Recombinant Human Neprilysin protein (386-617AA)
Raised In	Rabbit
Species Reactivity	Human
Tested Applications	ELISA, IHC; Recommended dilution: IHC:1:100-1:500
Form	Liquid
Conjugate	Non-conjugated
Storage Buffer	Preservative: 0.03% Proclin 300 Constituents: 50% Glycerol, 0.01M PBS, PH 7.4
Purification Method	>95%, Protein G purified
Isotype	IgG
Clonality	Polyclonal
Alias	Neprilysin (EC 3.4.24.11) (Atriopeptidase) (Common acute lymphocytic leukemia antigen) (CALLA) (Enkephalinase) (Neutral endopeptidase 24.11) (NEP) (Neutral endopeptidase) (Skin fibroblast elastase) (SFE) (CD antigen CD10), MME, EPN
Immunogen Species	Homo sapiens (Human)
Research Area	Signal Transduction
Target Names	MME

Image



IHC image of CSB-PA014653LA01HU diluted at 1:100 and staining in paraffin-embedded human kidney tissue performed on a Leica BondTM system. After dewaxing and hydration, antigen retrieval was mediated by high pressure in a citrate buffer (pH 6.0). Section was blocked with 10% normal goat serum 30min at RT. Then primary antibody (1% BSA) was incubated at 4°C overnight. The primary is detected by a Goat anti-rabbit polymer IgG labeled by HRP and visualized using 0.05% DAB.

Usage

For Research Use Only. Not for use in diagnostic or therapeutic procedures.