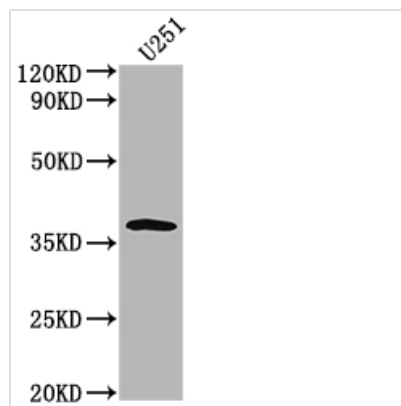




OR6B3 Antibody

Product Code	CSB-PA847734OA01HU
Storage	Upon receipt, store at -20°C or -80°C. Avoid repeated freeze.
Uniprot No.	Q8NGW1
Immunogen	Peptide sequence from Human Olfactory receptor 6B3 protein (259-272AA)
Raised In	Rabbit
Species Reactivity	Human
Tested Applications	ELISA, WB, IHC; Recommended dilution: WB:1:1000-1:5000, IHC:1:100-1:500
Form	Liquid
Conjugate	Non-conjugated
Storage Buffer	Preservative: 0.03% Proclin 300 Constituents: 50% Glycerol, 0.01M PBS, PH 7.4
Purification Method	>95%, Protein G purified
Isotype	IgG
Clonality	Polyclonal
Alias	Olfactory receptor 6B3 (Olfactory receptor OR2-2), OR6B3, OR6B3P
Immunogen Species	Homo sapiens (Human)
Research Area	Signal Transduction
Target Names	OR6B3

Image



Western Blot

Positive WB detected in: U251 whole cell lysate

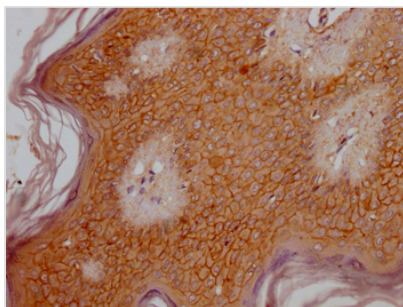
All lanes: OR6B3 antibody at 1:2000

Secondary

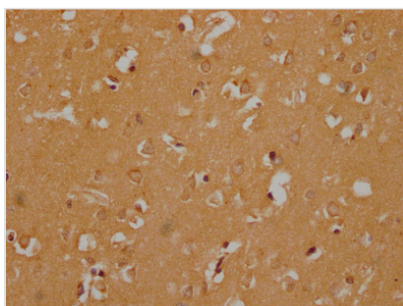
Goat polyclonal to rabbit IgG at 1/50000 dilution

Predicted band size: 38 kDa

Observed band size: 38 kDa



IHC image of CSB-PA847734OA01HU diluted at 1:300 and staining in paraffin-embedded human skin tissue performed on a Leica Bond™ system. After dewaxing and hydration, antigen retrieval was mediated by high pressure in a citrate buffer (pH 6.0). Section was blocked with 10% normal goat serum 30min at RT. Then primary antibody (1% BSA) was incubated at 4°C overnight. The primary is detected by a Goat anti-rabbit polymer IgG labeled by HRP and visualized using 0.05% DAB.



IHC image of CSB-PA847734OA01HU diluted at 1:300 and staining in paraffin-embedded human brain tissue performed on a Leica Bond™ system. After dewaxing and hydration, antigen retrieval was mediated by high pressure in a citrate buffer (pH 6.0). Section was blocked with 10% normal goat serum 30min at RT. Then primary antibody (1% BSA) was incubated at 4°C overnight. The primary is detected by a Goat anti-rabbit polymer IgG labeled by HRP and visualized using 0.05% DAB.

Usage

For Research Use Only. Not for use in diagnostic or therapeutic procedures.