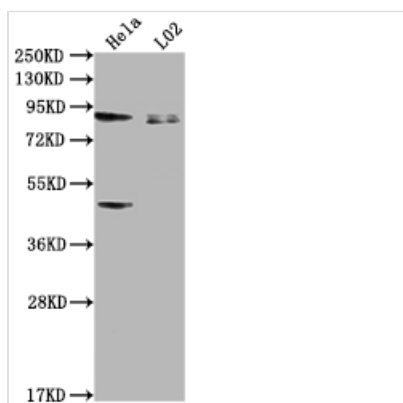




PIBF1 Antibody

Product Code	CSB-PA845171LA01HU
Storage	Upon receipt, store at -20°C or -80°C. Avoid repeated freeze.
Uniprot No.	Q8WXW3
Immunogen	Recombinant Human Progesterone-induced-blocking factor 1 protein (1-757AA)
Raised In	Rabbit
Species Reactivity	Human
Tested Applications	ELISA, WB, IF; Recommended dilution: WB:1:1000-1:5000, IF:1:100-1:500
Form	Liquid
Conjugate	Non-conjugated
Storage Buffer	Preservative: 0.03% Proclin 300 Constituents: 50% Glycerol, 0.01M PBS, PH 7.4
Purification Method	>95%, Protein G purified
Isotype	IgG
Clonality	Polyclonal
Alias	Progesterone-induced-blocking factor 1 (PIBF) (Centrosomal protein of 90 kDa) (CEP90), PIBF1, C13orf24 PIBF
Immunogen Species	Homo sapiens (Human)
Research Area	Signal Transduction
Target Names	PIBF1

Image



Western Blot

Positive WB detected in: HeLa whole cell lysate, L02 whole cell lysate

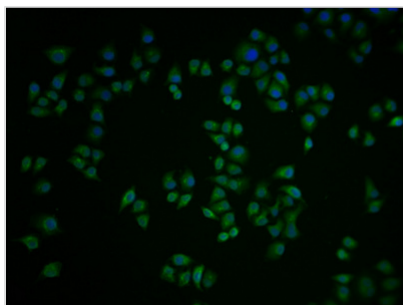
All lanes: PIBF1 antibody at 1:2000

Secondary

Goat polyclonal to rabbit IgG at 1/50000 dilution

Predicted band size: 90, 26, 13, 36 kDa

Observed band size: 90 kDa



Immunofluorescence staining of Hela cells with CSB-PA845171LA01HU at 1:100, counter-stained with DAPI. The cells were fixed in 4% formaldehyde and blocked in 10% normal Goat Serum. The cells were then incubated with the antibody overnight at 4°C. The secondary antibody was Alexa Fluor 488-conjugated AffiniPure Goat Anti-Rabbit IgG(H+L).

Usage

For Research Use Only. Not for use in diagnostic or therapeutic procedures.