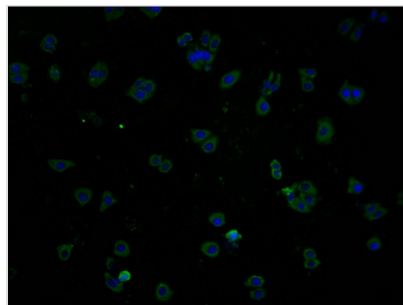




PLPPR1 Antibody

Product Code	CSB-PA823450OA01HU
Storage	Upon receipt, store at -20°C or -80°C. Avoid repeated freeze.
Uniprot No.	Q8TBJ4
Immunogen	Peptide sequence from Human Phospholipid phosphatase-related protein type 1 protein (51-66AA)
Raised In	Rabbit
Species Reactivity	Human
Tested Applications	ELISA, IF; Recommended dilution: IF:1:100-1:500
Form	Liquid
Conjugate	Non-conjugated
Storage Buffer	Preservative: 0.03% Proclin 300 Constituents: 50% Glycerol, 0.01M PBS, PH 7.4
Purification Method	>95%, Protein G purified
Isotype	IgG
Clonality	Polyclonal
Alias	Phospholipid phosphatase-related protein type 1 (Lipid phosphate phosphatase-related protein type 1) (Plasticity-related gene 3 protein) (PRG-3), PLPPR1, LPPR1 PRG3
Immunogen Species	Homo sapiens (Human)
Research Area	Signal Transduction
Target Names	PLPPR1

Image



Immunofluorescence staining of HepG2 cells with CSB-PA823450OA01HU at 1:100, counter-stained with DAPI. The cells were fixed in 4% formaldehyde and blocked in 10% normal Goat Serum. The cells were then incubated with the antibody overnight at 4°C. The secondary antibody was Alexa Fluor 488-conjugated AffiniPure Goat Anti-Rabbit IgG(H+L).

Usage

For Research Use Only. Not for use in diagnostic or therapeutic procedures.