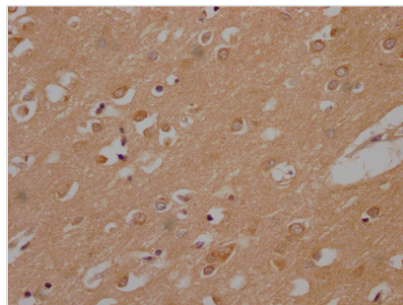




PLPPR1 Antibody

Product Code	CSB-PA823450PA01HU
Storage	Upon receipt, store at -20°C or -80°C. Avoid repeated freeze.
Uniprot No.	Q8TBJ4
Immunogen	Peptide sequence from Human Phospholipid phosphatase-related protein type 1 protein (51-66AA)
Raised In	Rabbit
Species Reactivity	Human
Tested Applications	ELISA, IHC; Recommended dilution: IHC:1:200-1:500
Form	Liquid
Conjugate	Non-conjugated
Storage Buffer	Preservative: 0.03% Proclin 300 Constituents: 50% Glycerol, 0.01M PBS, PH 7.4
Purification Method	>95%, Protein G purified
Isotype	IgG
Clonality	Polyclonal
Alias	Phospholipid phosphatase-related protein type 1 (Lipid phosphate phosphatase-related protein type 1) (Plasticity-related gene 3 protein) (PRG-3), PLPPR1, LPPR1 PRG3
Immunogen Species	Homo sapiens (Human)
Research Area	Signal Transduction
Target Names	PLPPR1

Image



IHC image of CSB-PA823450PA01HU diluted at 1:200 and staining in paraffin-embedded human brain tissue performed on a Leica BondTM system. After dewaxing and hydration, antigen retrieval was mediated by high pressure in a citrate buffer (pH 6.0). Section was blocked with 10% normal goat serum 30min at RT. Then primary antibody (1% BSA) was incubated at 4°C overnight. The primary is detected by a Goat anti-rabbit polymer IgG labeled by HRP and visualized using 0.05% DAB.