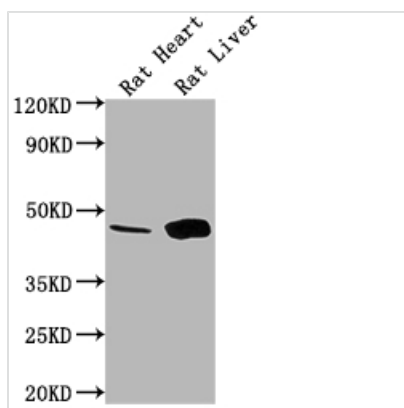




Ren1 Antibody

Product Code	CSB-PA019561LA01RA
Storage	Upon receipt, store at -20°C or -80°C. Avoid repeated freeze.
Uniprot No.	P08424
Immunogen	Recombinant Rat Ren1 protein (65-264AA)
Raised In	Rabbit
Species Reactivity	Rat
Tested Applications	ELISA, WB, IHC; Recommended dilution: WB:1:1000-1:5000, IHC:1:100-1:500
Form	Liquid
Conjugate	Non-conjugated
Storage Buffer	Preservative: 0.03% Proclin 300 Constituents: 50% Glycerol, 0.01M PBS, PH 7.4
Purification Method	>95%, Antigen Affinity purified & Affinity purified
Isotype	IgG
Clonality	Polyclonal
Alias	Renin (EC 3.4.23.15) (Angiotensinogenase), Ren1, Ren
Immunogen Species	Rattus norvegicus (Rat)
Research Area	Signal Transduction
Target Names	Ren1

Image



Western Blot

Positive WB detected in: Rat Heart tissue, Rat Liver tissue

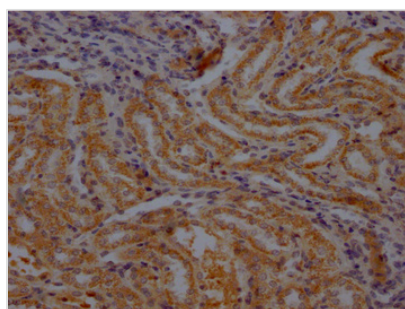
All lanes: Ren1 antibody at 1:1000

Secondary

Goat polyclonal to rabbit IgG at 1/50000 dilution

Predicted band size: 45 kDa

Observed band size: 45 kDa



IHC image of CSB-PA019561LA01RA diluted at 1:100 and staining in paraffin-embedded rat kidney tissue performed on a Leica Bond™ system. After dewaxing and hydration, antigen retrieval was mediated by high pressure in a citrate buffer (pH 6.0). Section was blocked with 10% normal goat serum 30min at RT. Then primary antibody (1% BSA) was incubated at 4°C overnight. The primary is detected by a Goat



anti-rabbit polymer IgG labeled by HRP and visualized using 0.05% DAB.

Usage

For Research Use Only. Not for use in diagnostic or therapeutic procedures.