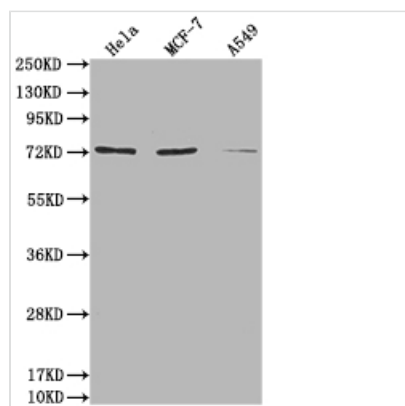




SAMHD1 Antibody

Product Code	CSB-PA020691LA01HU
Storage	Upon receipt, store at -20°C or -80°C. Avoid repeated freeze.
Uniprot No.	Q9Y3Z3
Immunogen	Recombinant Human Deoxynucleoside triphosphate triphosphohydrolase SAMHD1 protein (1-314AA)
Raised In	Rabbit
Species Reactivity	Human
Tested Applications	ELISA, WB, IHC; Recommended dilution: WB:1:1000-1:5000, IHC:1:100-1:500
Form	Liquid
Conjugate	Non-conjugated
Storage Buffer	Preservative: 0.03% Proclin 300 Constituents: 50% Glycerol, 0.01M PBS, PH 7.4
Purification Method	>95%, Antigen Affinity purified & Affinity purified
Isotype	IgG
Clonality	Polyclonal
Alias	Deoxynucleoside triphosphate triphosphohydrolase SAMHD1 (dNTPase) (EC 3.1.5.-) (Dendritic cell-derived IFNG-induced protein) (DCIP) (Monocyte protein 5) (MOP-5) (SAM domain and HD domain-containing protein 1), SAMHD1, MOP5
Immunogen Species	Homo sapiens (Human)
Research Area	Signal Transduction
Target Names	SAMHD1

Image

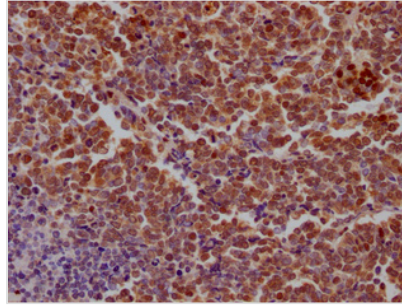


Western Blot

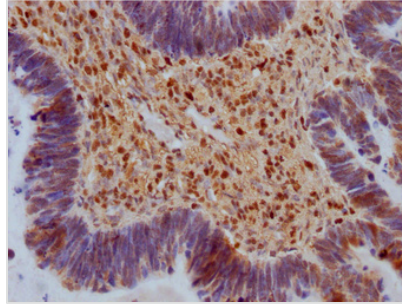
Positive WB detected in: HeLa whole cell lysate, MCF-7 whole cell lysate, A549 whole cell lysate
All lanes: SAMHD1 antibody at 1:2000

Secondary

Goat polyclonal to rabbit IgG at 1/50000 dilution
Predicted band size: 73, 64, 69 kDa
Observed band size: 73 kDa



IHC image of CSB-PA020691LA01HU diluted at 1:100 and staining in paraffin-embedded human lung cancer performed on a Leica Bond™ system. After dewaxing and hydration, antigen retrieval was mediated by high pressure in a citrate buffer (pH 6.0). Section was blocked with 10% normal goat serum 30min at RT. Then primary antibody (1% BSA) was incubated at 4°C overnight. The primary is detected by a Goat anti-rabbit IgG labeled by HRP and visualized using 0.05% DAB.



IHC image of CSB-PA020691LA01HU diluted at 1:100 and staining in paraffin-embedded human ovarian cancer performed on a Leica Bond™ system. After dewaxing and hydration, antigen retrieval was mediated by high pressure in a citrate buffer (pH 6.0). Section was blocked with 10% normal goat serum 30min at RT. Then primary antibody (1% BSA) was incubated at 4°C overnight. The primary is detected by a Goat anti-rabbit IgG labeled by HRP and visualized using 0.05% DAB.

Usage

For Research Use Only. Not for use in diagnostic or therapeutic procedures.