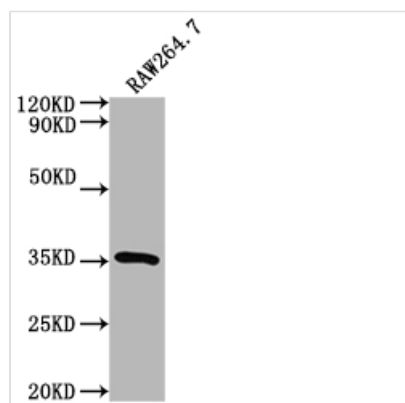




Sftpa1 Antibody

Product Code	CSB-PA021168LA01RA
Storage	Upon receipt, store at -20°C or -80°C. Avoid repeated freeze.
Uniprot No.	P08427
Immunogen	Recombinant Rat Sftpa1 protein (21-248 AA)
Raised In	Rabbit
Species Reactivity	Rat, Mouse
Tested Applications	ELISA, WB; Recommended dilution: WB:1:1000-1:5000
Form	Liquid
Conjugate	Non-conjugated
Storage Buffer	Preservative: 0.03% Proclin 300 Constituents: 50% Glycerol, 0.01M PBS, PH 7.4
Purification Method	>95%, Protein G purified
Isotype	IgG
Clonality	Polyclonal
Alias	Pulmonary surfactant-associated protein A (PSAP) (PSP-A) (SP-A), Sftpa1, Sftp-1 Sftp1 Sftpa
Immunogen Species	Rattus norvegicus (Rat)
Research Area	Signal Transduction
Target Names	Sftpa1

Image



Western Blot

Positive WB detected in: RAW264.7 whole cell lysate

All lanes: Sftpa1 antibody at 1:2000

Secondary

Goat polyclonal to rabbit IgG at 1/50000 dilution

Predicted band size: 27 kDa

Observed band size: 35 kDa

Usage

For Research Use Only. Not for use in diagnostic or therapeutic procedures.