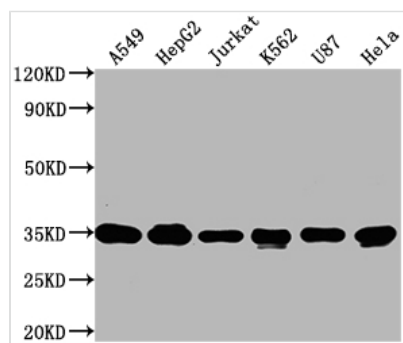




SUMF2 Antibody

| | |
|----------------------------|--|
| Product Code | CSB-PA839844LA01HU |
| Storage | Upon receipt, store at -20°C or -80°C. Avoid repeated freeze. |
| Uniprot No. | Q8NBJ7 |
| Immunogen | Recombinant Human Sulfatase-modifying factor 2 protein (26-301AA) |
| Raised In | Rabbit |
| Species Reactivity | Human |
| Tested Applications | ELISA, WB, IP; Recommended dilution: WB:1:1000-1:5000, IP:1:1000-1:2000 |
| Form | Liquid |
| Conjugate | Non-conjugated |
| Storage Buffer | Preservative: 0.03% Proclin 300 Constituents: 50% Glycerol, 0.01M PBS, PH 7.4 |
| Purification Method | >95%, Antigen Affinity purified & Affinity purified |
| Isotype | IgG |
| Clonality | Polyclonal |
| Alias | Sulfatase-modifying factor 2 (C-alpha-formylglycine-generating enzyme 2), SUMF2 |
| Immunogen Species | Homo sapiens (Human) |
| Research Area | Signal Transduction |
| Target Names | SUMF2 |

Image



Western Blot

Positive WB detected in: A549 whole cell lysate, HepG2 whole cell lysate, Jurkat whole cell lysate, K562 whole cell lysate, U87 whole cell lysate, HeLa whole cell lysate

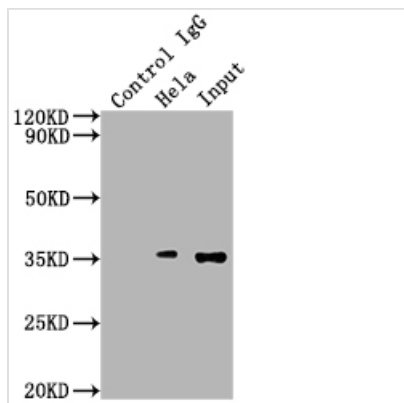
All lanes: SUMF2 antibody at 1:2000

Secondary

Goat polyclonal to rabbit IgG at 1/50000 dilution

Predicted band size: 34, 25, 38, 24, 35 kDa

Observed band size: 34 kDa



Immunoprecipitating SUMF2 in HeLa whole cell lysate

Lane 1: Rabbit control IgG instead of CSB-PA839844LA01HU in HeLa whole cell lysate. For western blotting, a HRP-conjugated Protein G antibody was used as the secondary antibody (1/50000)

Lane 2: CSB-PA839844LA01HU (5ug) + HeLa whole cell lysate (500ug)

Lane 3: HeLa whole cell lysate (10ug)

Usage

For Research Use Only. Not for use in diagnostic or therapeutic procedures.