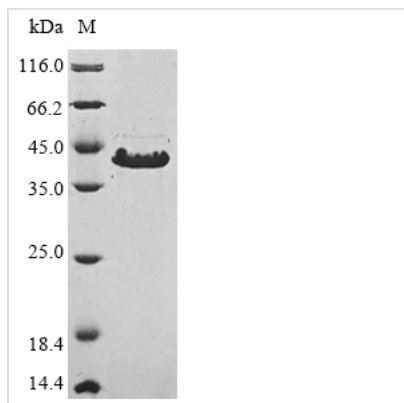




Recombinant Mycoplasma pneumoniae Cytadherence high molecular weight protein 3 (hmw3), partial

Product Code	CSB-EP690351MLW
Abbreviation	Recombinant Mycoplasma pneumoniae hmw3 protein, partial
Storage	The shelf life is related to many factors, storage state, buffer ingredients, storage temperature and the stability of the protein itself. Generally, the shelf life of liquid form is 6 months at -20°C/-80°C. The shelf life of lyophilized form is 12 months at -20°C/-80°C.
Uniprot No.	Q50360
Form	Liquid or Lyophilized powder
Storage Buffer	If the delivery form is liquid, the default storage buffer is Tris/PBS-based buffer, 5%-50% glycerol. If the delivery form is lyophilized powder, the buffer before lyophilization is Tris/PBS-based buffer, 6% Trehalose.
Product Type	Recombinant Proteins
Immunogen Species	Mycoplasma pneumoniae (strain ATCC 29342 / M129)
Purity	≥ 85% as determined by SDS-PAGE.
Sequence	PVVDPDATPEQQADQLFGLDPLPQAPDEYQDTTAPPAYDQTFDQATYDQQAY DQNYDPNAYYDQQAYDQSFDQQAYDQAYDANAYNTQNYDQAHDPNAYYDS QAYSDDPDQASAVAPIEVAPLQPEPVAPVVEPTAVPIVESAPIVEVTPTVEPTPTP VVETAPVVEAPKVVEPTPTPVVE
Research Area	Cardiovascular
Source	E.coli
Target Names	hmw3
Protein Names	Recommended name: Cytadherence high molecular weight protein 3 Alternative name(s): Accessory adhesin protein 3 Cytadherence accessory protein 3
Expression Region	160-339aa
Notes	Repeated freezing and thawing is not recommended. Store working aliquots at 4°C for up to one week.
Tag Info	N-terminal 10xHis-tagged and C-terminal Myc-tagged
Mol. Weight	27.1 kDa
Protein Length	Partial

Image



(Tris-Glycine gel) Discontinuous SDS-PAGE (reduced) with 5% enrichment gel and 15% separation gel.

Reconstitution

We recommend that this vial be briefly centrifuged prior to opening to bring the contents to the bottom. Please reconstitute protein in deionized sterile water to a concentration of 0.1-1.0 mg/mL. We recommend to add 5-50% of glycerol (final concentration) and aliquot for long-term storage at -20°C/-80°C. Our default final concentration of glycerol is 50%. Customers could use it as reference.

Shelf Life

The shelf life is related to many factors, storage state, buffer ingredients, storage temperature and the stability of the protein itself. Generally, the shelf life of liquid form is 6 months at -20°C/-80°C. The shelf life of lyophilized form is 12 months at -20°C/-80°C.