

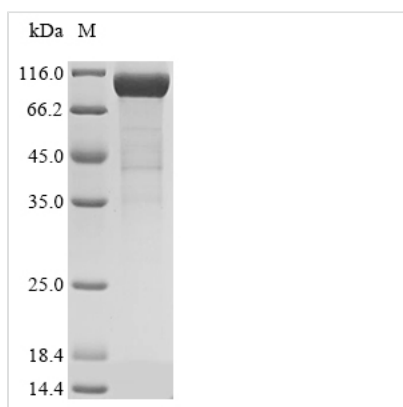


Recombinant Mouse Complement factor I (Cfi)

Product Code	CSB-MP005279MO
Abbreviation	Recombinant Mouse Cfi protein
Storage	The shelf life is related to many factors, storage state, buffer ingredients, storage temperature and the stability of the protein itself. Generally, the shelf life of liquid form is 6 months at -20°C/-80°C. The shelf life of lyophilized form is 12 months at -20°C/-80°C.
Uniprot No.	Q61129
Form	Liquid or Lyophilized powder
Storage Buffer	If the delivery form is liquid, the default storage buffer is Tris/PBS-based buffer, 5%-50% glycerol. If the delivery form is lyophilized powder, the buffer before lyophilization is Tris/PBS-based buffer, 6% Trehalose.
Product Type	Recombinant Proteins
Immunogen Species	Mus musculus (Mouse)
Purity	Greater than 85% as determined by SDS-PAGE.
Sequence	RSPSASDLPQEELVDQKCLLQKYTHRSCNKVFCQPWQRCIEGTCICKLPYQC PRAGTPVCAMNGRSYPTYCHQKSFECLHPEIKFSHNGTCAAEGKFNVSLIYGR TKTEGLVQVKLVDQDERMFICKNSWSMAEANVACVDLGFPLGVDRDIQGSFNIS GNLHINDTECLHVHCRGVETSLAECRAFTKRRELSNGLAGVVCYKQDADFPTS LSFQCVNGKHIPQEKACNGVNDCCGDSDELCKGCRGNASLCKSGVCIPDQ YKCNGEVDCITGEDESRCEEDRQQNIPKGLARSAQGEAEIETEEMLTSGM DNERKRIKSLPKLSCGVKRNTHTRRKRIVIGGKPANVGDYPWQVAIKDGQRIT CGGIYIGGCWILTAHCVRPSRAHSYQVWTALLDWLKPNSQLGIQTVKRIVIH EKYNGATFQNDIALIEMKMHTGKKECELPNSVPACVPWSPYLFQPNDRCIISG WGRGKDNQKVYSLRWGEVDLIGNCSQFYPPDRYYEKEMQCAGTRDGSIDACK GDSGGPLVCEDINNVTVVWGVISWGENCCKPEFPVYTRVANYFDWISYHVG RSLVSQHNH
Research Area	Epigenetics and Nuclear Signaling
Source	Mammalian cell
Target Names	Cfi
Protein Names	Recommended name: Complement factor I EC= 3.4.21.45 Alternative name(s): C3B/C4B inactivator Cleaved into the following 2 chains: 1. Complement factor I heavy chain 2. Complement factor I light chain
Expression Region	19-603aa
Notes	Repeated freezing and thawing is not recommended. Store working aliquots at 4°C for up to one week.
Tag Info	N-terminal 10xHis-tagged and C-terminal Myc-tagged
Mol. Weight	69.8 kDa
Protein Length	Full Length of Mature Protein



Image



(Tris-Glycine gel) Discontinuous SDS-PAGE (reduced) with 5% enrichment gel and 15% separation gel.

Reconstitution

We recommend that this vial be briefly centrifuged prior to opening to bring the contents to the bottom. Please reconstitute protein in deionized sterile water to a concentration of 0.1-1.0 mg/mL. We recommend to add 5-50% of glycerol (final concentration) and aliquot for long-term storage at -20°C/-80°C. Our default final concentration of glycerol is 50%. Customers could use it as reference.

Shelf Life

The shelf life is related to many factors, storage state, buffer ingredients, storage temperature and the stability of the protein itself.

Generally, the shelf life of liquid form is 6 months at -20°C/-80°C. The shelf life of lyophilized form is 12 months at -20°C/-80°C.