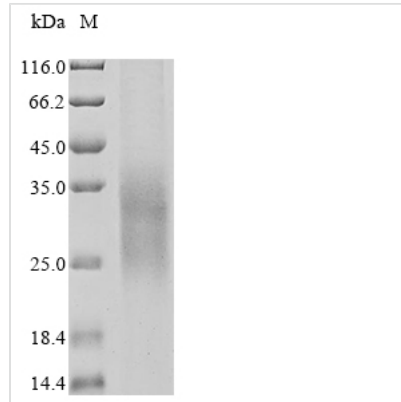


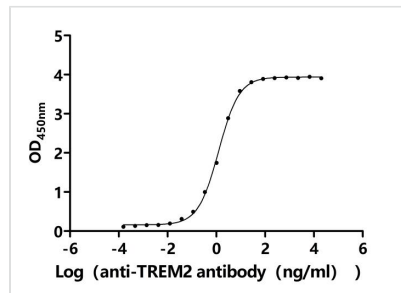


Recombinant Human Triggering receptor expressed on myeloid cells 2 (TREM2), partial (Active)

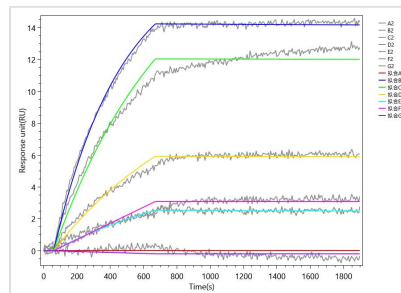
Product Code	CSB-MP024405HU
Abbreviation	Recombinant Human TREM2 protein, partial (Active)
Storage	The shelf life is related to many factors, storage state, buffer ingredients, storage temperature and the stability of the protein itself. Generally, the shelf life of liquid form is 6 months at -20°C/-80°C. The shelf life of lyophilized form is 12 months at -20°C/-80°C.
Uniprot No.	Q9NZC2
Form	Lyophilized powder
Storage Buffer	Lyophilized from a 0.2 µm sterile filtered PBS, 6% Trehalose, pH 7.4
Product Type	Recombinant Protein
Immunogen Species	Homo sapiens (Human)
Biological Activity	<p>①Measured by its binding ability in a functional ELISA. Immobilized Human TREM2 at 2 µg/mL can bind Anti-TREM2 recombinant antibody(CSB-RA024405MA5HU). The EC50 is 1.145-1.358 ng/mL.</p> <p>②TREM2 Recombinant Monoclonal Antibody (CSB-RA024405MA5HU) captured on Protein A Chip can bind Recombinant Human TREM2 with an affinity constant of 0.146 nM as detected by TREM2aSPR Assay (WeSPRTM 200).</p>
Purity	Greater than 90% as determined by SDS-PAGE.
Sequence	HNTTVFQGVAGQSLQVSCPYPDSMKHWGRRKAWCRQLGEEKGPCQRVVSTHN LWLLSFLRRWNGSTAITDDTLGGTLTITLRNLQPHDAGLYQCQSLHGSEADTL RKVLVEVLADPLDHRDAGDLWFPGESESFEDAHVEHSISRSLLEGEIPFPPTS
Source	Mammalian cell
Target Names	TREM2
Expression Region	19-174aa
Notes	Repeated freezing and thawing is not recommended. Store working aliquots at 4°C for up to one week.
Tag Info	N-terminal 10xHis-tagged and C-terminal Myc-tagged
Mol. Weight	22.5 kDa
Protein Length	Partial
Image	



(Tris-Glycine gel) Discontinuous SDS-PAGE (reduced) with 5% enrichment gel and 15% separation gel.



Activity
 Measured by its binding ability in a functional ELISA. Immobilized Human TREM2 at 2 µg/ml can bind Anti-TREM2 recombinant antibody (CSB-RA024405MA5HU). The EC₅₀ is 1.145-1.358 ng/mL.



Activity
 TREM2 Recombinant Monoclonal Antibody (CSB-RA024405MA5HU) captured on Protein A Chip can bind Recombinant Human TREM2 with an affinity constant of 0.146 nM as detected by TREM2aSPR Assay (WeSPRTM 200).

Endotoxin

Less than 1.0 EU/ug as determined by LAL method.

Reconstitution

We recommend that this vial be briefly centrifuged prior to opening to bring the contents to the bottom. Please reconstitute protein in deionized sterile water to a concentration of 0.1-1.0 mg/mL. We recommend to add 5-50% of glycerol (final concentration) and aliquot for long-term storage at -20°C/-80°C. Our default final concentration of glycerol is 50%. Customers could use it as reference.

Shelf Life

The shelf life is related to many factors, storage state, buffer ingredients, storage temperature and the stability of the protein itself. Generally, the shelf life of liquid form is 6 months at -20°C/-80°C. The shelf life of lyophilized form is 12 months at -20°C/-80°C.