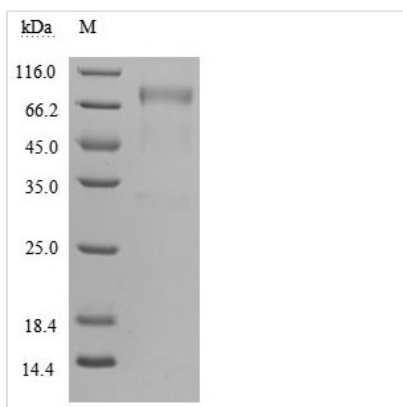


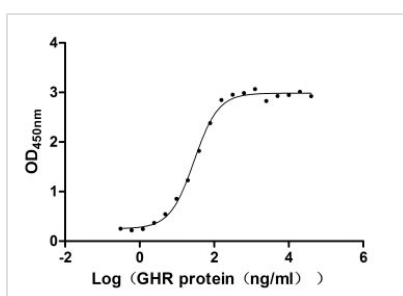


# Recombinant Human Growth hormone receptor (GHR), partial (Active)

<b>Product Code</b>	CSB-MP009411HU
<b>Relevance</b>	Receptor for pituitary gland growth hormone involved in regulating postnatal body growth.
<b>Abbreviation</b>	Recombinant Human GHR protein, partial (Active)
<b>Storage</b>	The shelf life is related to many factors, storage state, buffer ingredients, storage temperature and the stability of the protein itself. Generally, the shelf life of liquid form is 6 months at -20°C/-80°C. The shelf life of lyophilized form is 12 months at -20°C/-80°C.
<b>Uniprot No.</b>	P10912
<b>Form</b>	Lyophilized powder
<b>Product Type</b>	Others
<b>Immunogen Species</b>	Homo sapiens (Human)
<b>Biological Activity</b>	①Measured by its binding ability in a functional ELISA. Immobilized GH1 (CSB-MP009407HU) at 1 µg/ml can bind human GHR, the EC <sub>50</sub> of human GHR protein is 24.96-33.39 ng/ml.②Human GH1 protein his/myc tag (CSB-MP009407HU) captured on COOH chip can bind Human GHR protein Fc tag (CSB-MP009411HU) with an affinity constant of 6.1 nM as detected by LSPR Assay.
<b>Purity</b>	≥ 95% as determined by SDS-PAGE. ≥ 95% as determined by SEC-HPLC.
<b>Sequence</b>	AILSRAPWSLQSVNPGLKTNSSKEPKFTKCRSPERETFSCHWTDDEVHHGTKN LGPIQLFYTRRNTQEWTQEWKECPDYVSAGENSICYFNSSFTSIWIPYCIKLTS NGGTVDEKCFVDEIVQPDPIALNWTLNLSLTGIHADIQVRWEAPRNADIQK GWMVLEYELQYKEVNETKWKMMDPILTTSVPVYSLKVDKEYEVRVRSKQRNS GNYGEFSEVLVYVTLTPQMSQFTCEEDFY
<b>Research Area</b>	Cancer
<b>Source</b>	Mammalian cell
<b>Target Names</b>	GHR
<b>Expression Region</b>	27-264aa
<b>Notes</b>	Repeated freezing and thawing is not recommended. Store working aliquots at 4°C for up to one week.
<b>Tag Info</b>	C-terminal hFc1-tagged
<b>Mol. Weight</b>	58.8 kDa
<b>Protein Length</b>	Partial
<b>Image</b>	

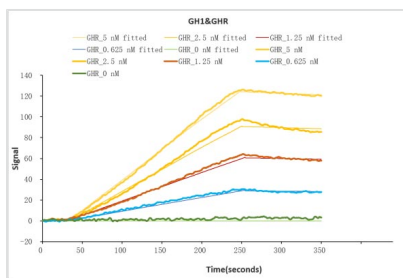


(Tris-Glycine gel) Discontinuous SDS-PAGE (reduced) with 5% enrichment gel and 15% separation gel.

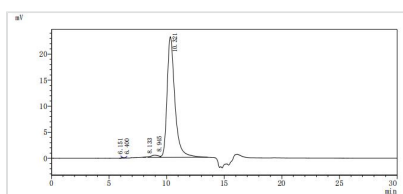


#### Activity

Measured by its binding ability in a functional ELISA. Immobilized GH1 (CSB-MP009407HU) at 1 µg/ml can bind human GHR, the EC<sub>50</sub> of human GHR protein is 24.96-33.39 ng/ml.



Human GH1 protein his/myc tag (CSB-MP009407HU) captured on COOH chip can bind Human GHR protein Fc tag (CSB-MP009411HU) with an affinity constant of 6.1 nM as detected by LSPR Assay.



The purity of GHR was greater than 95% as determined by SEC-HPLC

#### Endotoxin

Less than 1.0 EU/ug as determined by LAL method.

#### Reconstitution

We recommend that this vial be briefly centrifuged prior to opening to bring the contents to the bottom. Please reconstitute protein in deionized sterile water to a concentration of 0.1-1.0 mg/mL. We recommend to add 5-50% of glycerol (final concentration) and aliquot for long-term storage at -20°C/-80°C. Our default final concentration of glycerol is 50%. Customers could use it as reference.

#### Shelf Life

The shelf life is related to many factors, storage state, buffer ingredients, storage temperature and the stability of the protein itself.

Generally, the shelf life of liquid form is 6 months at -20°C/-80°C. The shelf life of lyophilized form is 12 months at -20°C/-80°C.