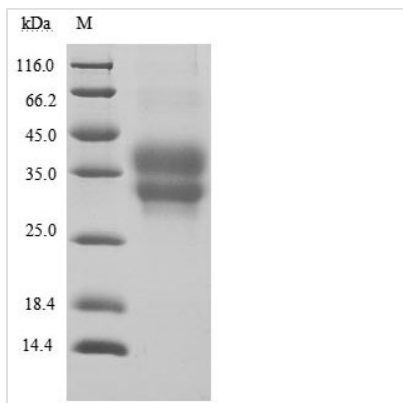


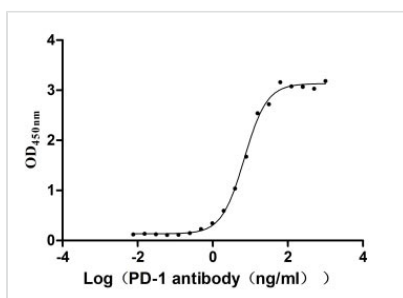


# Recombinant Human Programmed cell death protein 1 (PDCD1), partial (Active)

<b>Product Code</b>	CSB-MP619964HU1
<b>Relevance</b>	Inhibitory cell surface receptor involved in the regulation of T-cell function during immunity and tolerance. Upon ligand binding, inhibits T-cell effector functions in an antigen-specific manner. Possible cell death inducer, in association with other factors.
<b>Abbreviation</b>	Recombinant Human PDCD1 protein, partial (Active)
<b>Storage</b>	The shelf life is related to many factors, storage state, buffer ingredients, storage temperature and the stability of the protein itself. Generally, the shelf life of liquid form is 6 months at -20°C/-80°C. The shelf life of lyophilized form is 12 months at -20°C/-80°C.
<b>Uniprot No.</b>	Q15116
<b>Form</b>	Lyophilized powder
<b>Product Type</b>	Others
<b>Immunogen Species</b>	Homo sapiens (Human)
<b>Biological Activity</b>	①Measured by its binding ability in a functional ELISA. Immobilized PD-1 at 2 µg/ml can bind Anti-PD-1 recombinant antibody, the EC <sub>50</sub> of human PD-1 protein is 6.087-7.854 ng/ml.②Measured by its binding ability in a functional ELISA. Immobilized PD-1 at 2 µg/ml can bind Nivolumab, the EC <sub>50</sub> of human PD-1 protein is 9.713-12.39 ng/ml.
<b>Purity</b>	Greater than 95% as determined by SDS-PAGE. Greater than 95% as determined by SEC-HPLC.
<b>Sequence</b>	LDSPDRPWNPPPTFSPALLVVTEGDNATFTCSFSNTSESFVLNWYRMSPSNQT DKLAAFPEDRSQPGQDCRFRVTQLPNGRDFHMSVVRARRNDSGTYLCGAISL APKAQIKESLRAELRVTERRAEVPTAHPSPSPRPAGQFQ
<b>Research Area</b>	Cancer
<b>Source</b>	Mammalian cell
<b>Target Names</b>	PDCD1
<b>Expression Region</b>	25-167aa
<b>Notes</b>	Repeated freezing and thawing is not recommended. Store working aliquots at 4°C for up to one week.
<b>Tag Info</b>	C-terminal 6xHis-tagged
<b>Mol. Weight</b>	18.2 kDa
<b>Protein Length</b>	Partial
<b>Image</b>	

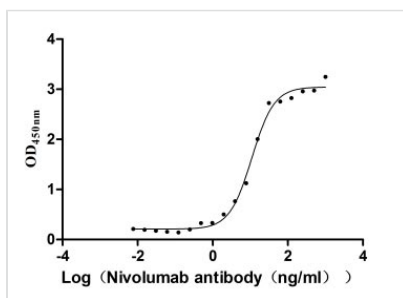


(Tris-Glycine gel) Discontinuous SDS-PAGE (reduced) with 5% enrichment gel and 15% separation gel.



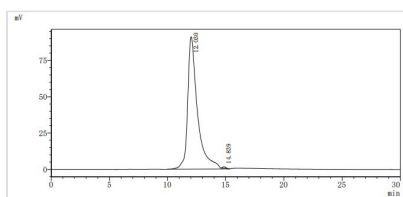
#### Activity

① Measured by its binding ability in a functional ELISA. Immobilized PD-1 at 2 μg/ml can bind Anti-PD-1 recombinant antibody, the EC<sub>50</sub> of human PD-1 protein is 6.087-7.854 ng/ml.



#### Activity

② Measured by its binding ability in a functional ELISA. Immobilized PD-1 at 2 μg/ml can bind Nivolumab, the EC<sub>50</sub> of human PD-1 protein is 9.713-12.39 ng/ml.



The purity of PDCD1 was greater than 95% as determined by SEC-HPLC

### Endotoxin

Less than 1.0 EU/ug as determined by LAL method.

### Reconstitution

We recommend that this vial be briefly centrifuged prior to opening to bring the contents to the bottom. Please reconstitute protein in deionized sterile water to a concentration of 0.1-1.0 mg/mL. We recommend to add 5-50% of glycerol (final concentration) and aliquot for long-term storage at -20°C/-80°C. Our default final concentration of glycerol is 50%. Customers could use it as reference.

### Shelf Life

The shelf life is related to many factors, storage state, buffer ingredients, storage temperature and the stability of the protein itself.

Generally, the shelf life of liquid form is 6 months at -20°C/-80°C. The shelf life of lyophilized form is 12 months at -20°C/-80°C.