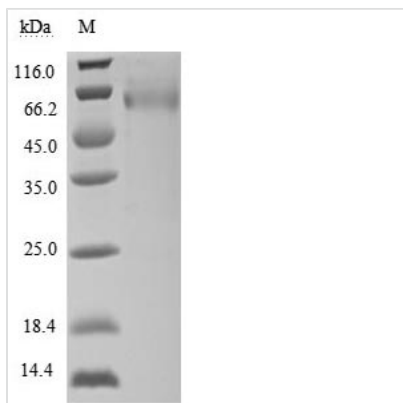


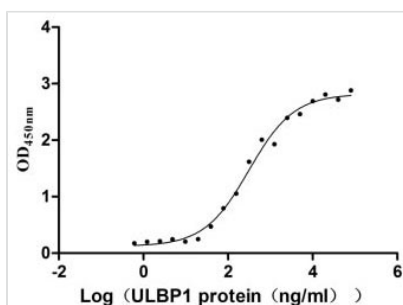


Recombinant Human UL16-binding protein 1 (ULBP1) (Active)

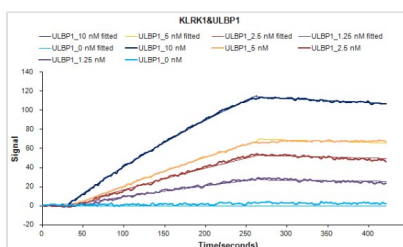
Product Code	CSB-MP887177HU
Relevance	Binds and activates the KLRK1/NKG2D receptor, mediating natural killer cell cytotoxicity.
Abbreviation	Recombinant Human ULBP1 protein (Active)
Storage	The shelf life is related to many factors, storage state, buffer ingredients, storage temperature and the stability of the protein itself. Generally, the shelf life of liquid form is 6 months at -20°C/-80°C. The shelf life of lyophilized form is 12 months at -20°C/-80°C.
Uniprot No.	Q9BZM6
Form	Lyophilized powder
Product Type	Others
Immunogen Species	Homo sapiens (Human)
Biological Activity	①Measured by its binding ability in a functional ELISA. Immobilized KLRK1 (CSB-MP012474HU1) at 10 µg/ml can bind human ULBP1, the EC ₅₀ of human ULBP1 protein is 228.5-427.6 ng/ml.②Human KLRK1 protein Fc tag (CSB-MP012474HU1) captured on COOH chip can bind Human ULBP1 protein Fc/myc tag (CSB-MP887177HU) with an affinity constant of 2.27 nM as detected by LSPR Assay.
Purity	Greater than 90% as determined by SDS-PAGE.
Sequence	GWVDTHCLCYDFIITPKSRPEPQWCEVQGLVDERPFLHYDCVNHKAKAFASL GKKVNVTKTWEEQTETLRDVVDFLKGQLLDIQVENLIPIEPLTLQARMSCEHEA HGHGRGSWQFLFNGQKFLFDSNNRKTALHPGAKKMKTEKWEKNRDVTMF FQKISLGDCKMWLEEFMLYWEQMLDPTKPPSLAPG
Research Area	Cancer
Source	Mammalian cell
Target Names	ULBP1
Expression Region	26-216aa
Notes	Repeated freezing and thawing is not recommended. Store working aliquots at 4°C for up to one week.
Tag Info	C-terminal hFc1-Myc-tagged
Mol. Weight	52.4 kDa
Protein Length	Full Length of Mature Protein
Image	



(Tris-Glycine gel) Discontinuous SDS-PAGE (reduced) with 5% enrichment gel and 15% separation gel.



Activity
Measured by its binding ability in a functional ELISA. Immobilized KLRK1 (CSB-MP012474HU1) at 10 μ g/ml can bind human ULBP1, the EC_{50} of human ULBP1 protein is 228.5-427.6 ng/ml.



Human KLRK1 protein Fc tag (CSB-MP012474HU1) captured on COOH chip can bind Human ULBP1 protein Fc/myc tag (CSB-MP887177HU) with an affinity constant of 2.27 nM as detected by LSPR Assay.

Endotoxin

Less than 1.0 EU/ug as determined by LAL method.

Reconstitution

We recommend that this vial be briefly centrifuged prior to opening to bring the contents to the bottom. Please reconstitute protein in deionized sterile water to a concentration of 0.1-1.0 mg/mL. We recommend to add 5-50% of glycerol (final concentration) and aliquot for long-term storage at -20°C/-80°C. Our default final concentration of glycerol is 50%. Customers could use it as reference.

Shelf Life

The shelf life is related to many factors, storage state, buffer ingredients, storage temperature and the stability of the protein itself. Generally, the shelf life of liquid form is 6 months at -20°C/-80°C. The shelf life of lyophilized form is 12 months at -20°C/-80°C.