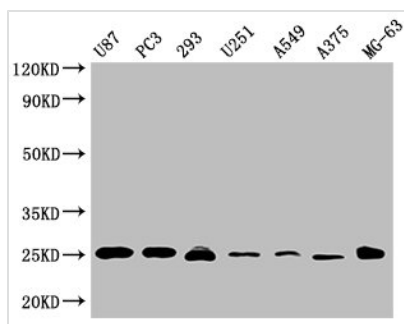




CD9 Monoclonal Antibody

Product Code	CSB-MA004969A0m
Storage	Upon receipt, store at -20°C or -80°C. Avoid repeated freeze.
Uniprot No.	P21926
Immunogen	Recombinant Human CD9 antigen protein (112-195AA)
Raised In	Mouse
Species Reactivity	Human
Tested Applications	ELISA, WB, IHC; Recommended dilution: WB: 1:1000-1:16000, IHC: 1:50-1:200
Relevance	Involved in platelet activation and aggregation. Regulates paranodal junction formation. Involved in cell adhesion, cell motility and tumor metastasis. Required for sperm-egg fusion.
Form	Liquid
Conjugate	Non-conjugated
Storage Buffer	Preservative: 0.03% Proclin 300 Constituents: 50% Glycerol, 0.01M PBS, PH 7.4
Purification Method	>95%, Protein G purified
Isotype	IgG2a
Clonality	Monoclonal
Product Type	Monoclonal Antibody
Immunogen Species	Homo sapiens (Human)
Target Names	CD9
Clone No.	5A6D8

Image

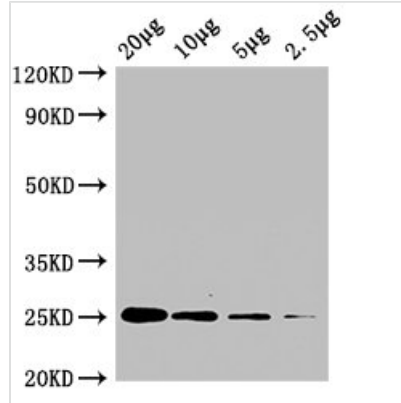


Western Blot

Positive WB detected in: U87 whole cell lysate, PC3 whole cell lysate, 293 whole cell lysate, U251 whole cell lysate, A549 whole cell lysate, A375 whole cell lysate, MG-63 whole cell lysate
All lanes CD9 antibody at 1:2000

Secondary

Goat polyclonal to mouse IgG at 1/50000 dilution
Predicted band size: 25 KDa
Observed band size: 25 KDa
Exposure time:5min

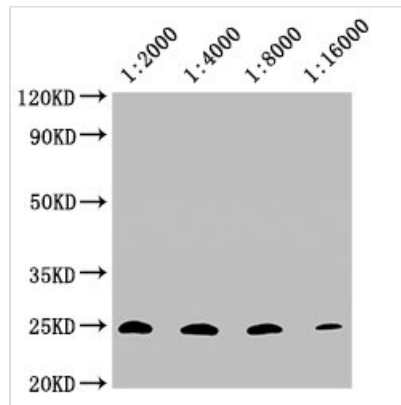


Western Blot

Positive WB detected in: A549 whole cell lysate at 20µg, 10µg, 5µg, 2.5µg All lanes: CD9 antibody at 1:2000

Secondary

Goat polyclonal to mouse IgG at 1/50000 dilution
 Predicted band size: 25 KDa
 Observed band size: 25 KDa
 Exposure time:10min

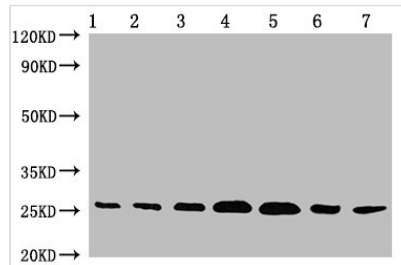


Western Blot

Positive WB detected in: 20µg A549 whole cell lysate CD9 antibody at 1:2000, 1:4000, 1:8000, 1:16000

Secondary

Goat polyclonal to mouse IgG at 1/50000 dilution
 Predicted band size: 25 KDa
 Observed band size: 25 KDa
 Exposure time:10min



Western Blot

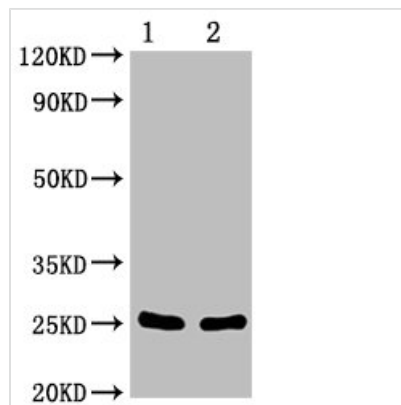
Positive WB detected in:

1. Exosomes extracted from plasma
2. Exosomes extracted from serum
3. Exosomes extracted from urine
4. Exosomes extracted in cell supernatant
5. Exosomes extracted from latex
6. Exosomes extracted from saliva
7. Hela whole cell lysate

All lanes CD9 antibody at 1:1000

Secondary

Goat polyclonal to mouse IgG at 1/50000 dilution
 Predicted band size: 25 KDa
 Observed band size: 25 KDa
 Exposure time:5min



Western Blot

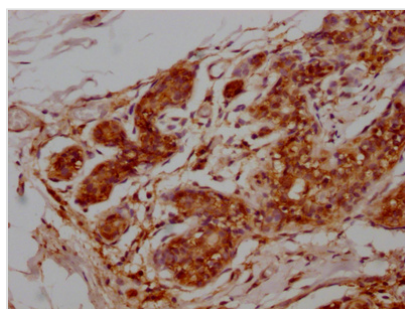
Positive WB detected in:

1. Exosomes extracted from saliva
2. Hela whole cell lysate

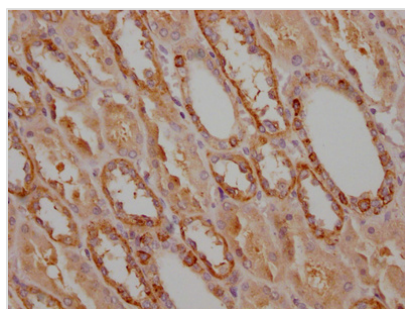
All lanes Ywhaz antibody at 1:5000

Secondary

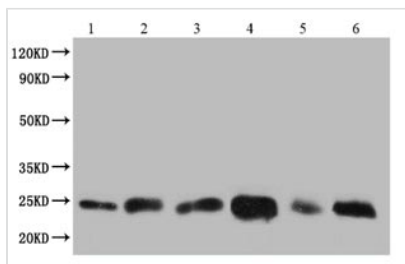
Goat polyclonal to mouse IgG at 1/50000 dilution
 Predicted band size: 25 KDa
 Observed band size: 25 KDa
 Exposure time:5min



IHC image of MA004969A0m diluted at 1:50 and staining in paraffin-embedded human breast cancer tissue performed on a Leica Bond™ system. After dewaxing and hydration, antigen retrieval was mediated by high pressure in a citrate buffer (pH 6.0). Section was blocked with 10% normal goat serum 30min at 37°C. Then primary antibody (1% BSA) was incubated at 4°C overnight. The primary is detected by a Goat anti-rabbit IgG labeled by HRP and visualized using 0.05% DAB.



IHC image of MA004969A0m diluted at 1:50 and staining in paraffin-embedded human kidney tissue performed on a Leica Bond™ system. After dewaxing and hydration, antigen retrieval was mediated by high pressure in a citrate buffer (pH 6.0). Section was blocked with 10% normal goat serum 30min at 37°C. Then primary antibody (1% BSA) was incubated at 4°C overnight. The primary is detected by a Goat anti-rabbit IgG labeled by HRP and visualized using 0.05% DAB.



1. Exosomes extracted from plasma
2. Exosomes extracted from serum
3. Exosomes extracted from urine
4. Exosomes extracted from Hela cells
5. Exosomes extracted from latex
6. Exosomes extracted from saliva

Usage

For Research Use Only. Not for use in diagnostic or therapeutic procedures.