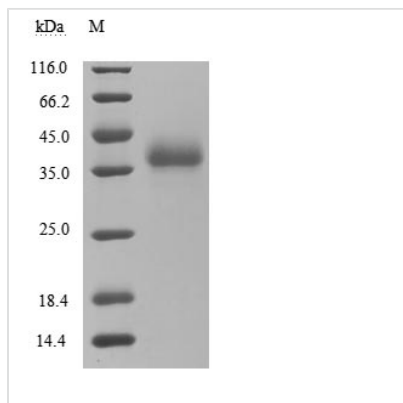


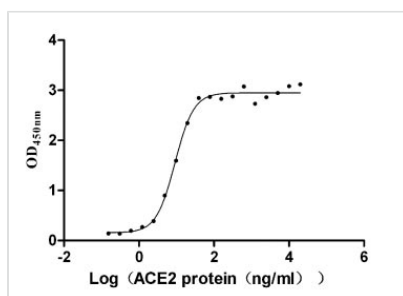


Recombinant Severe acute respiratory syndrome coronavirus Spike glycoprotein (S), partial (Active)

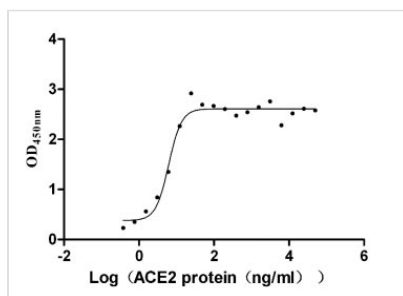
Product Code	CSB-MP348663HQE
Abbreviation	Recombinant SARS-CoV S protein, partial (Active)
Storage	The shelf life is related to many factors, storage state, buffer ingredients, storage temperature and the stability of the protein itself. Generally, the shelf life of liquid form is 6 months at -20°C/-80°C. The shelf life of lyophilized form is 12 months at -20°C/-80°C.
Uniprot No.	P59594
Form	Lyophilized powder
Storage Buffer	Lyophilized from a 0.2 μm filtered 20 mM Tris-HCl, 0.5 M NaCl, 6% Trehalose, pH 8.0
Product Type	Recombinant Protein
Immunogen Species	Human SARS coronavirus (SARS-CoV) (Severe acute respiratory syndrome coronavirus)
Biological Activity	①Measured by its binding ability in a functional ELISA. Immobilized SARS-CoV S-RBD at 2 μg/ml can bind Paguma larvata ACE2 (CSB-MP684964PAL), the EC ₅₀ is 5.056-7.559 ng/ml.②Measured by its binding ability in a functional ELISA. Immobilized SARS-CoV S-RBD at 5 μg/ml can bind human ACE2 (CSB-MP866317HU), the EC ₅₀ is 7.941-10.49 ng/ml.
Purity	Greater than 95% as determined by SDS-PAGE.
Sequence	RVVPSGDVVRFPNITNLCPFGEVFNATKFPSVYAWERKKISNCVADYSVLYNS TFFSTFKCYGVSATKLNLCFSNVYADSFVVKGDDVRQIAPGQTGVIADYNYK LPDDFMGCVLAWNTRNIDATSTGNVYKYRYLRHGKLRPFERDISNVPFSPD GKPCTPPALNCYWPLNDYGFYTTTGIGYQPYRVVVLSELLNAPATVCGPKLS TDLIKNQCVNF
Research Area	Microbiology
Source	Mammalian cell
Target Names	S
Expression Region	306-527aa
Notes	Repeated freezing and thawing is not recommended. Store working aliquots at 4°C for up to one week.
Tag Info	N-terminal 10xHis-tagged and C-terminal Myc-tagged
Mol. Weight	30.0 kDa
Protein Length	Partial
Image	



(Tris-Glycine gel) Discontinuous SDS-PAGE (reduced) with 5% enrichment gel and 15% separation gel.



Activity
Measured by its binding ability in a functional ELISA. Immobilized SARS-CoV S-RBD at 2 $\mu\text{g/ml}$ can bind Paguma larvata ACE2 (CSB-MP684964PAL), the EC_{50} is 5.056-7.559 ng/ml.



Activity
Measured by its binding ability in a functional ELISA. Immobilized SARS-CoV S-RBD at 5 $\mu\text{g/ml}$ can bind human ACE2 (CSB-MP866317HU), the EC_{50} is 7.941-10.49 ng/ml.

Endotoxin

Less than 1.0 EU/ug as determined by LAL method.

Reconstitution

We recommend that this vial be briefly centrifuged prior to opening to bring the contents to the bottom. Please reconstitute protein in deionized sterile water to a concentration of 0.1-1.0 mg/mL. We recommend to add 5-50% of glycerol (final concentration) and aliquot for long-term storage at $-20^{\circ}\text{C}/-80^{\circ}\text{C}$. Our default final concentration of glycerol is 50%. Customers could use it as reference.

Shelf Life

The shelf life is related to many factors, storage state, buffer ingredients, storage temperature and the stability of the protein itself. Generally, the shelf life of liquid form is 6 months at $-20^{\circ}\text{C}/-80^{\circ}\text{C}$. The shelf life of lyophilized form is 12 months at $-20^{\circ}\text{C}/-80^{\circ}\text{C}$.