

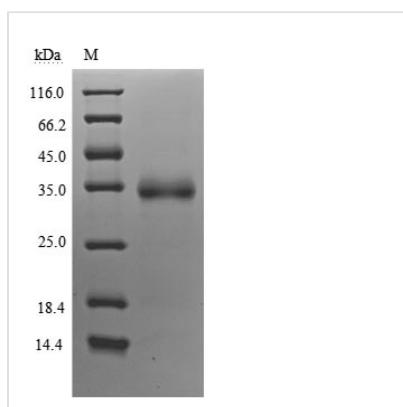


# Recombinant Severe acute respiratory syndrome coronavirus 2 Spike glycoprotein (S) (V483A), partial (Active)

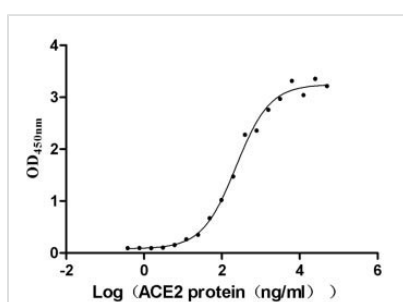
<b>Product Code</b>	CSB-MP3324GMY1(M5)
<b>Abbreviation</b>	Recombinant SARS-CoV-2 S protein (V483A), partial (Active)
<b>Storage</b>	The shelf life is related to many factors, storage state, buffer ingredients, storage temperature and the stability of the protein itself. Generally, the shelf life of liquid form is 6 months at -20°C/-80°C. The shelf life of lyophilized form is 12 months at -20°C/-80°C.
<b>Uniprot No.</b>	P0DTC2
<b>Form</b>	Lyophilized powder
<b>Storage Buffer</b>	Lyophilized from a 0.2 µm sterile filtered 20 mM Tris-HCl, 0.5 M NaCl, 6% Trehalose, pH 8.0
<b>Product Type</b>	Recombinant Protein
<b>Immunogen Species</b>	Severe acute respiratory syndrome coronavirus 2 (2019-nCoV) (SARS-CoV-2)
<b>Biological Activity</b>	①Measured by its binding ability in a functional ELISA. Immobilized SARS-CoV-2-S1-RBD (V483A) at 5 µg/ml can bind human ACE2 (CSB-MP866317HU), the EC <sub>50</sub> is 196.4-272.1 ng/ml.②Measured by its binding ability in a functional ELISA. Immobilized SARS-CoV-2-S1-RBD (V483A) at 2 µg/ml can bind SARS-CoV-2-S Antibody (CSB-RA33245A1GMY), the EC <sub>50</sub> is 7.481-18.76 ng/ml.
<b>Purity</b>	≥ 90% as determined by SDS-PAGE.
<b>Sequence</b>	RVQPTESIVRFPNITNLCPFGEVFNATRFASVYAWNKRKISNCVADYSVLYNSA SFSTFKCYGVSPTKLNDLCFTNVYADSFVIRGDEVQRQIAPGQTGKIADYNYKLP DDFTGCVIAWNSNNLDSKVGGNYNLYRLFRKSNLKPFERDISTEIQAGSTP CNGAEGFNCYFPLQSYGFQPTNGVGYQPYRVVLSFELLHAPATVCGPKKST NLVKNKCVNF
<b>Research Area</b>	Microbiology
<b>Source</b>	Mammalian cell
<b>Target Names</b>	S
<b>Expression Region</b>	319-541aa(V483A)
<b>Notes</b>	Repeated freezing and thawing is not recommended. Store working aliquots at 4°C for up to one week.
<b>Tag Info</b>	C-terminal 10xHis-tagged
<b>Mol. Weight</b>	27.8 kDa
<b>Protein Length</b>	Partial



## Image

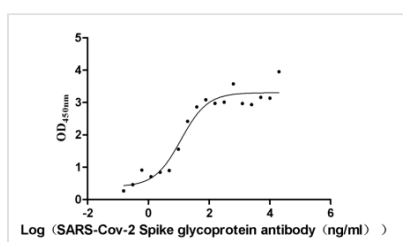


(Tris-Glycine gel) Discontinuous SDS-PAGE (reduced) with 5% enrichment gel and 15% separation gel.



### Activity

Measured by its binding ability in a functional ELISA. Immobilized SARS-CoV-2-S1-RBD (V483A) at 5  $\mu\text{g/ml}$  can bind human ACE2 (CSB-MP866317HU), the  $\text{EC}_{50}$  is 196.4-272.1 ng/ml.



### Activity

Measured by its binding ability in a functional ELISA. Immobilized SARS-CoV-2-S1-RBD (V483A) at 2  $\mu\text{g/ml}$  can bind SARS-CoV-2-S Antibody (CSB-RA33245A1GMY), the  $\text{EC}_{50}$  is 7.481- 18.76 ng/ml.

## Endotoxin

Less than 1.0 EU/ $\mu\text{g}$  as determined by LAL method.

## Reconstitution

We recommend that this vial be briefly centrifuged prior to opening to bring the contents to the bottom. Please reconstitute protein in deionized sterile water to a concentration of 0.1-1.0 mg/mL. We recommend to add 5-50% of glycerol (final concentration) and aliquot for long-term storage at  $-20^{\circ}\text{C}/-80^{\circ}\text{C}$ . Our default final concentration of glycerol is 50%. Customers could use it as reference.

## Shelf Life

The shelf life is related to many factors, storage state, buffer ingredients, storage temperature and the stability of the protein itself.

Generally, the shelf life of liquid form is 6 months at  $-20^{\circ}\text{C}/-80^{\circ}\text{C}$ . The shelf life of lyophilized form is 12 months at  $-20^{\circ}\text{C}/-80^{\circ}\text{C}$ .