



Recombinant Human Angiotensin-converting enzyme 2 (ACE2), partial, Biotinylated (Active)

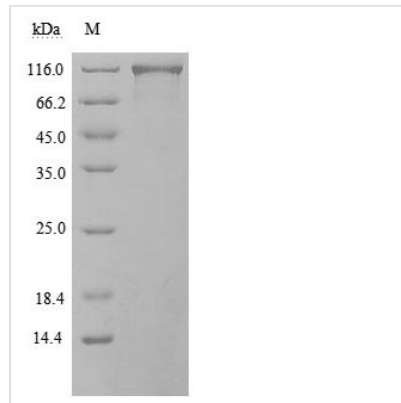
Product Code	CSB-MP866317HU-B
Abbreviation	Recombinant Human ACE2 protein, partial, Biotinylated (Active)
Storage	The shelf life is related to many factors, storage state, buffer ingredients, storage temperature and the stability of the protein itself. Generally, the shelf life of liquid form is 6 months at -20°C/-80°C. The shelf life of lyophilized form is 12 months at -20°C/-80°C.
Uniprot No.	Q9BYF1
Form	Lyophilized powder
Storage Buffer	Lyophilized from a 0.2 µm sterile filtered PBS, 6% Trehalose, pH 7.4.
Product Type	Recombinant Protein
Immunogen Species	Homo sapiens (Human)
Biological Activity	① Measured by its binding ability in a functional ELISA. Immobilized SARS-CoV-2-S1-RBD(CSB-MP3324GMY1b1) at 2 µg/ml can bind Biotinylated human ACE2, the EC ₅₀ is 4.599-8.322 ng/ml.
Purity	Greater than 90% as determined by SDS-PAGE.
Sequence	<p>QSTIEEQAKTFLDKFNHEAEDLFYQSSLASWNYNTNITEENVQNMNNAAGDKW SAFLKEQSTLAQMYPLQEIQNLTVKLQLQALQQNGSSVLSSEDKSKRLNTILNTM STIYSTGKVCNPDNPQECLLLEPGLNEIMANSLDYNERLWAWESWRSEVVGKQ LRPLYEEYVVLKNEMARANHYEDYGDYWRGDYEVNGVDGYDYSRGQLIEDV EHTFEEIKPLYEHLHAYVRAKLMNAYPSYISPIGCLPAHLLGDMWGRFWTNLY SLTVPFQKPNIDVTDAMVDQAWDAQRFKEAEKFFVSVGLPNMTQGFWENS MLTDPGNVQKAVCHPTAWDLGKGDFRILMCTKVTMDDFLTAHHEMGHIQYD MAYAAQPFLLRNGANEGFHEAVGEIMSLSAATPKHLKSIGLLSPDFQEDNETEI NFLKQALTIVGTLPTFTYMLEKWRWMVFKGEIPKDQWMKKWWEMKREIVGVV EPVPHDETYCDPASLFHVSNDYSFIRYYTRTLYQFQFQEALCQAAKHEGPLHK CDISNSTEAGQKLFNMLRLGKSEPWTALENVVGAKNMNVRPLLNYFEPLFT WLKDQNKNSFVGWSTDWSPYADQSIKVRISLKSALGDKAYEWNDNEMYLFR SSVAYAMRQYFLKVKQMILFGEEDVRVANLKPRIFFVTAPKNVSDIIPRT EVEKAIRMRSRINDAFRLNDNSLEFLGIQPTLGPPNQPPVS</p>
Research Area	Cell Biology
Source	Mammalian cell
Target Names	ACE2
Expression Region	18-740aa
Notes	Repeated freezing and thawing is not recommended. Store working aliquots at 4°C for up to one week.
Tag Info	C-terminal mFc-Avi-tagged



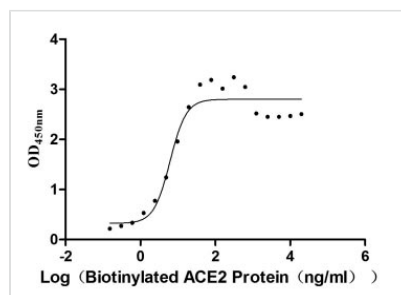
Mol. Weight 112.6 kDa

Protein Length Partial

Image



(Tris-Glycine gel) Discontinuous SDS-PAGE (reduced) with 5% enrichment gel and 15% separation gel.



Activity
 Measured by its binding ability in a functional ELISA. Immobilized SARS-CoV-2-S1-RBD(CSB-MP3324GMY1b1)at 2 µg/ml can bind Biotinylated human ACE2, the EC₅₀ is 4.599-8.322 ng/ml.

Endotoxin Less than 1.0 EU/ug as determined by LAL method.

Reconstitution We recommend that this vial be briefly centrifuged prior to opening to bring the contents to the bottom. Please reconstitute protein in deionized sterile water to a concentration of 0.1-1.0 mg/mL. We recommend to add 5-50% of glycerol (final concentration) and aliquot for long-term storage at -20°C/-80°C. Our default final concentration of glycerol is 50%. Customers could use it as reference.

Shelf Life The shelf life is related to many factors, storage state, buffer ingredients, storage temperature and the stability of the protein itself. Generally, the shelf life of liquid form is 6 months at -20°C/-80°C. The shelf life of lyophilized form is 12 months at -20°C/-80°C.