



# Recombinant *Macaca fascicularis* Angiotensin-converting enzyme (ACE2), partial (Active)

<b>Product Code</b>	CSB-MP3414MOV
<b>Abbreviation</b>	Recombinant <i>Cynomolgus</i> monkey ACE2 protein, partial (Active)
<b>Storage</b>	The shelf life is related to many factors, storage state, buffer ingredients, storage temperature and the stability of the protein itself. Generally, the shelf life of liquid form is 6 months at -20°C/-80°C. The shelf life of lyophilized form is 12 months at -20°C/-80°C.
<b>Uniprot No.</b>	A0A2K5X283
<b>Form</b>	Lyophilized powder
<b>Storage Buffer</b>	Lyophilized from a 0.2 μm filtered PBS, 6% Trehalose, pH 7.4
<b>Product Type</b>	Recombinant Protein
<b>Immunogen Species</b>	<i>Macaca fascicularis</i> (Crab-eating macaque) ( <i>Cynomolgus</i> monkey)
<b>Biological Activity</b>	① Measured by its binding ability in a functional ELISA. Immobilized SARS-CoV-2-S1-RBD (CSB-MP3324GMY1b1) at 5 μg/ml can bind <i>Cynomolgus</i> -ACE2, the EC <sub>50</sub> is 5.638-9.496 ng/ml.
<b>Purity</b>	Greater than 90% as determined by SDS-PAGE. Greater than 90% as determined by SEC-HPLC.
<b>Sequence</b>	QSTIEEQAKTFLDKFNHEAEDLFYQSSLASWNYNTNITEENVQNMNNAGEKW SAFLKEQSTLAQMYPQLQEIQNLTVKLQLQALQQNGSSVLSSEDKSKRLNTILNTM STIYSTGKVCNPNNPQECLLLDPGLNEIMEKSLDYNERLWAWEGWRSEVVGKQ LRPLYEEYVVLKNEMARANHYKDYGDYWRGNYEVNGVDGYDYNRDQLIEDV ERTFEEIKPLYEHLHAYVRAKLMNAYPSYISPTGCLPAHLLGDMWGRFWTNLY SLTVPGQKPNIDVTDAMVNQAWNAQRIFKEAEKFFVSVGLPNMTQGFWENS MLTDPGNVQKVCHPTAWDLGKGFRIIMCTKVMTDDFLTAHHEMGHIQYDM AYAAQPFLLRNGANEGFHEAVGEIMSLSAATPKHLKSIGLLSPDFQEDNETEIN FLLKQALTIVGTLPFTYMLEKWRWMVFKGEIPKDQWMKKWWEMKREIVGVVE PVPHDETYCDPASLFHVSNDYSFIRYYTRTLYQFQFQEALCQAAKHEGPLHKC DISNSTEAGQKLLNMLKLGKSEPWTALENVVGAKNMNVRPLLNYFEPLFTWL KDQNKNSFVGWSTDWSPYADQSIKVRISLKSALGDKAYEWN DNEMYLFRSSV AYAMRTYFLEIKHQ TILFGEEDVRVADLKPRISFNFYVTAPKNVSDIIPRTEVEEA IRISRSRINDAFRLNDNSLEFLGIQTTLAPPYQSPVTT
<b>Research Area</b>	Cancer
<b>Source</b>	Mammalian cell
<b>Target Names</b>	ACE2
<b>Expression Region</b>	18-741aa
<b>Notes</b>	Repeated freezing and thawing is not recommended. Store working aliquots at 4°C for up to one week.

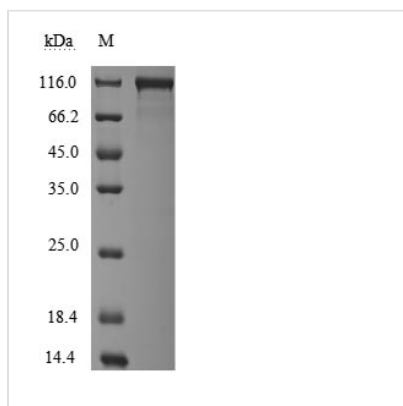


**Tag Info** C-terminal hFc1-tagged

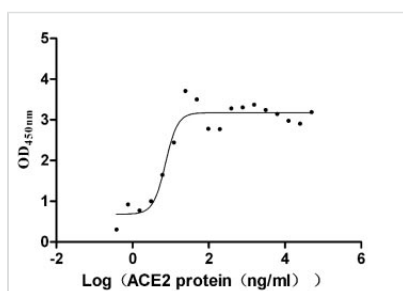
**Mol. Weight** 112.7 kDa

**Protein Length** Partial

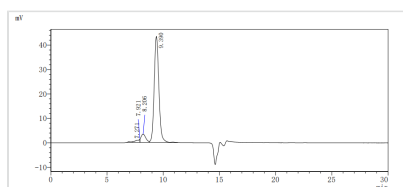
**Image**



(Tris-Glycine gel) Discontinuous SDS-PAGE (reduced) with 5% enrichment gel and 15% separation gel.



**Activity**  
Measured by its binding ability in a functional ELISA. Immobilized SARS-CoV-2-S1-RBD (CSB-MP3324GMY1b1) at 5 µg/ml can bind Cynomolgus-ACE2, the EC<sub>50</sub> is 5.638-9.496 ng/ml.



The purity of ACE2 was greater than 95% as determined by SEC-HPLC

**Endotoxin**

Less than 1.0 EU/ug as determined by LAL method.

**Reconstitution**

We recommend that this vial be briefly centrifuged prior to opening to bring the contents to the bottom. Please reconstitute protein in deionized sterile water to a concentration of 0.1-1.0 mg/mL. We recommend to add 5-50% of glycerol (final concentration) and aliquot for long-term storage at -20°C/-80°C. Our default final concentration of glycerol is 50%. Customers could use it as reference.

**Shelf Life**

The shelf life is related to many factors, storage state, buffer ingredients, storage temperature and the stability of the protein itself. Generally, the shelf life of liquid form is 6 months at -20°C/-80°C. The shelf life of lyophilized form is 12 months at -20°C/-80°C.