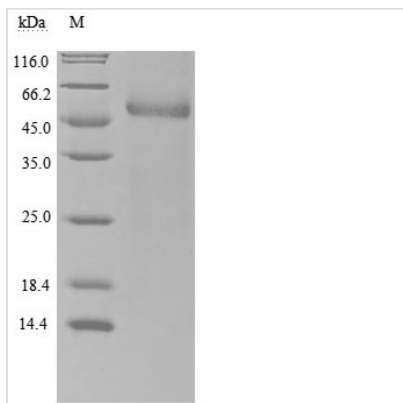


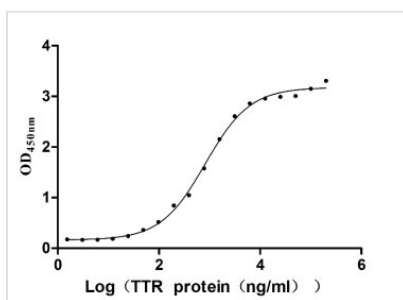


Recombinant Human Retinol-binding protein 4 (RBP4) (Active)

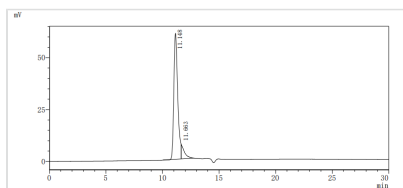
Product Code	CSB-MP019483HU
Abbreviation	Recombinant Human RBP4 protein (Active)
Storage	The shelf life is related to many factors, storage state, buffer ingredients, storage temperature and the stability of the protein itself. Generally, the shelf life of liquid form is 6 months at -20°C/-80°C. The shelf life of lyophilized form is 12 months at -20°C/-80°C.
Uniprot No.	P02753
Form	Lyophilized powder
Storage Buffer	Lyophilized from a 0.2 µm filtered PBS, 6% Trehalose, pH 7.4
Product Type	Recombinant Protein
Immunogen Species	Homo sapiens (Human)
Biological Activity	①Measured by its binding ability in a functional ELISA. Immobilized RBP4 at 5 µg/ml can bind TTR (CSB-MP025270HUh6), the EC ₅₀ is 695.0-970.1 ng/ml.
Purity	Greater than 90% as determined by SDS-PAGE. Greater than 90% as determined by SEC-HPLC.
Sequence	ERDCRVSSFRVKENFDKARFSGTWYAMAKKDPEGLFLQDNIVAEFSVDETQQ MSATAKGRVRLNNWDVCA DMVGTFTDTE DPAKFKMKYWG VASFLQKGNDD HWIVDTDYDTYAVQYSCRLNLDGTCADSY SFVFSRDPNGLPPEAQKIVRQR QEELCLARQYRLIVHNGYCDGRSERNLL
Research Area	Cancer
Source	Mammalian cell
Target Names	RBP4
Expression Region	19-201aa
Notes	Repeated freezing and thawing is not recommended. Store working aliquots at 4°C for up to one week.
Tag Info	C-terminal hFc1-tagged
Mol. Weight	50.0 kDa
Protein Length	Full Length of Mature Protein
Image	



(Tris-Glycine gel) Discontinuous SDS-PAGE (reduced) with 5% enrichment gel and 15% separation gel.



Activity
Measured by its binding ability in a functional ELISA. Immobilized RBP4 at 5 $\mu\text{g/ml}$ can bind TTR (CSB-MP025270HUh6), the EC_{50} is 695.0-970.1 ng/ml.



The purity of RBP4 was greater than 90% as determined by SEC-HPLC.

Endotoxin

Less than 1.0 EU/ μg as determined by LAL method.

Reconstitution

We recommend that this vial be briefly centrifuged prior to opening to bring the contents to the bottom. Please reconstitute protein in deionized sterile water to a concentration of 0.1-1.0 mg/mL. We recommend to add 5-50% of glycerol (final concentration) and aliquot for long-term storage at $-20^{\circ}\text{C}/-80^{\circ}\text{C}$. Our default final concentration of glycerol is 50%. Customers could use it as reference.

Shelf Life

The shelf life is related to many factors, storage state, buffer ingredients, storage temperature and the stability of the protein itself. Generally, the shelf life of liquid form is 6 months at $-20^{\circ}\text{C}/-80^{\circ}\text{C}$. The shelf life of lyophilized form is 12 months at $-20^{\circ}\text{C}/-80^{\circ}\text{C}$.