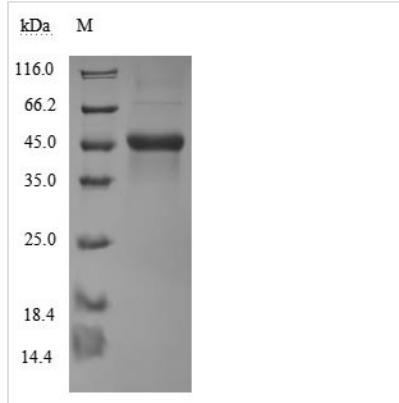


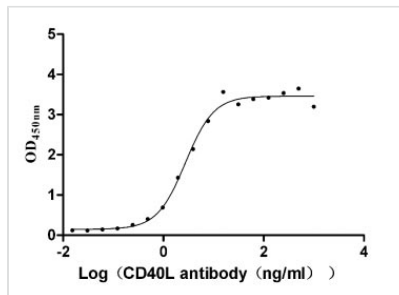


Recombinant Human CD40 ligand (CD40LG), partial (Active)

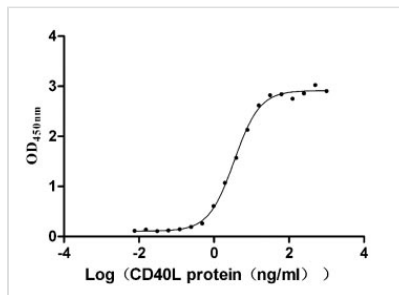
Product Code	CSB-MP004937HU3
Abbreviation	Recombinant Human CD40LG protein, partial (Active)
Storage	The shelf life is related to many factors, storage state, buffer ingredients, storage temperature and the stability of the protein itself. Generally, the shelf life of liquid form is 6 months at -20°C/-80°C. The shelf life of lyophilized form is 12 months at -20°C/-80°C.
Uniprot No.	P29965
Form	Lyophilized powder
Storage Buffer	Lyophilized from a 0.2 μm filtered PBS, 6% Trehalose, pH 7.4
Product Type	Recombinant Protein
Immunogen Species	Homo sapiens (Human)
Biological Activity	①Measured by its binding ability in a functional ELISA. Immobilized CD40L at 2 μg/ml can bind Anti- CD40L Rabbit Monoclonal Antibody(CSB-RA156386A0HU), the EC ₅₀ is 2.353-3.232 ng/ml.②Measured by its binding ability in a functional ELISA. Immobilized CD40(CSB-MP004936HU1) at 2 μg/ml can bind CD40L, the EC ₅₀ is 3.112-3.858 ng/ml. ③Human CD40 protein hFc tag (CSB-MP004936HU1) captured on COOH chip can bind Human CD40L protein hFc and Flag tag (CSB-MP004937HU3) with an affinity constant of 2.06 nM as detected by LSPR Assay.
Purity	Greater than 90% as determined by SDS-PAGE.
Sequence	MQKGDQNPQIAAHVISEASSKTTSVLQWAEKGYTMSNNLVTLENGKQLTVK RQGLYYIYAQVTFCNSNREASSQAPFIASLCLKSPGRFERILLRAANTHSSAKPC GQQSIHLGGVFELQPGASVFNVDPSQVSHGTGFTSFGLLKL
Research Area	Cancer
Source	Mammalian cell
Target Names	CD40LG
Expression Region	113-261aa
Notes	Repeated freezing and thawing is not recommended. Store working aliquots at 4°C for up to one week.
Tag Info	N-terminal hFc-Flag-tagged
Mol. Weight	44.5 kDa
Protein Length	Partial
Image	



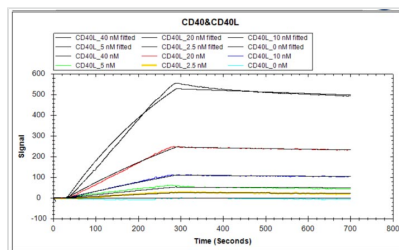
(Tris-Glycine gel) Discontinuous SDS-PAGE (reduced) with 5% enrichment gel and 15% separation gel.



Activity
Measured by its binding ability in a functional ELISA. Immobilized CD40L at 2 µg/ml can bind Anti- CD40L Rabbit Monoclonal Antibody(CSB-RA156386A0HU), the EC₅₀ is 2.353-3.232 ng/ml.



Activity
Measured by its binding ability in a functional ELISA. Immobilized CD40(CSB-MP004936HU1) at 2 µg/ml can bind CD40L, the EC₅₀ is 3.112-3.858 ng/ml.



Activity
Human CD40 protein hFc tag (CSB-MP004936HU1) captured on COOH chip can bind Human CD40L protein hFc and Flag tag (CSB-MP004937HU3) with an affinity constant of 2.06 nM as detected by LSPR Assay.

Endotoxin

Less than 1.0 EU/ug as determined by LAL method.

Reconstitution

We recommend that this vial be briefly centrifuged prior to opening to bring the contents to the bottom. Please reconstitute protein in deionized sterile water to a concentration of 0.1-1.0 mg/mL. We recommend to add 5-50% of glycerol (final concentration) and aliquot for long-term storage at -20°C/-80°C. Our default final concentration of glycerol is 50%. Customers could use it as reference.

Shelf Life

The shelf life is related to many factors, storage state, buffer ingredients, storage temperature and the stability of the protein itself.

Generally, the shelf life of liquid form is 6 months at -20°C/-80°C. The shelf life of lyophilized form is 12 months at -20°C/-80°C.