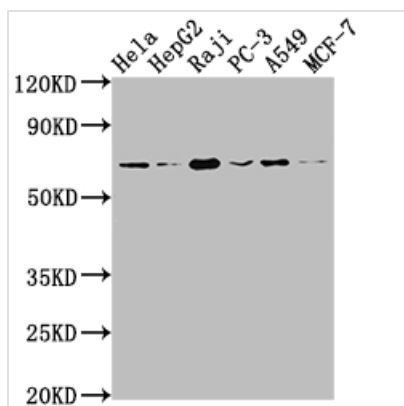




ALAS1 Recombinant Monoclonal Antibody

Product Code	CSB-RA266893A0HU
Storage	Upon receipt, store at -20°C or -80°C. Avoid repeated freeze.
Uniprot No.	P13196
Immunogen	A synthesized peptide derived from human Alas1
Species Reactivity	Human
Tested Applications	ELISA, WB; Recommended dilution: WB:1:500-1:5000
Relevance	cytosol, mitochondrial matrix, mitochondrion, nucleoplasm, 5-aminolevulinate synthase activity, identical protein binding, heme biosynthetic process, mitochondrion organization, regulation of lipid metabolic process
Form	Liquid
Conjugate	Non-conjugated
Storage Buffer	Rabbit IgG in 10mM phosphate buffered saline , pH 7.4, 150mM sodium chloride, 0.05% BSA, 0.02% sodium azide and 50% glycerol.
Purification Method	Affinity-chromatography
Isotype	Rabbit IgG
Clonality	Monoclonal
Product Type	Recombinant Antibody
Immunogen Species	Homo sapiens (Human)
Research Area	Cardiovascular; Metabolism; Signal transduction
Target Names	ALAS1
Clone No.	2A9

Image



Western Blot

Positive WB detected in: HeLa whole cell lysate, HepG2 whole cell lysate, Raji whole cell lysate, PC-3 whole cell lysate, A549 whole cell lysate, MCF-7 whole cell lysate

All lanes: ALAS1 antibody at 1:1500

Secondary

Goat polyclonal to rabbit IgG at 1/50000 dilution

Predicted band size: 71, 13 kDa

Observed band size: 71 kDa

Usage

For Research Use Only. Not for use in diagnostic or therapeutic procedures.