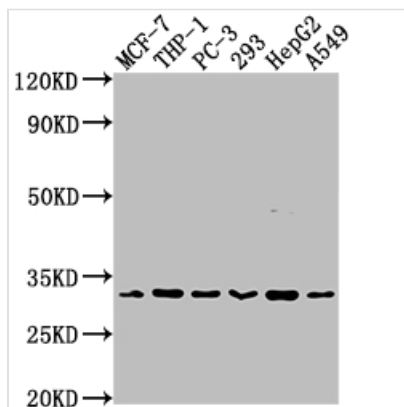




CD8A Recombinant Monoclonal Antibody

Product Code	CSB-RA934881A0HU
Storage	Upon receipt, store at -20°C or -80°C. Avoid repeated freeze.
Uniprot No.	P01732
Immunogen	A synthesized peptide derived from human CD8
Species Reactivity	Human
Tested Applications	ELISA, WB, IHC, IP; Recommended dilution: WB:1:500-1:5000, IHC:1:50-1:200, IP:1:200-1:1000
Relevance	Identifies cytotoxic/suppressor T-cells that interact with MHC class I bearing targets. CD8 is thought to play a role in the process of T-cell mediated killing. CD8 alpha chains binds to class I MHC molecules alpha-3 domains.
Form	Liquid
Conjugate	Non-conjugated
Storage Buffer	Rabbit IgG in phosphate buffered saline, pH 7.4, 150mM NaCl, 0.02% sodium azide and 50% glycerol.
Purification Method	Affinity-chromatography
Isotype	Rabbit IgG
Clonality	Monoclonal
Product Type	Recombinant Antibody
Immunogen Species	Homo sapiens (Human)
Research Area	Immunology
Target Names	CD8A
Clone No.	2F2

Image



Western Blot

Positive WB detected in: MCF-7 whole cell lysate, THP-1 whole cell lysate, PC-3 whole cell lysate, 293 whole cell lysate, HepG2 whole cell lysate, A549 whole cell lysate

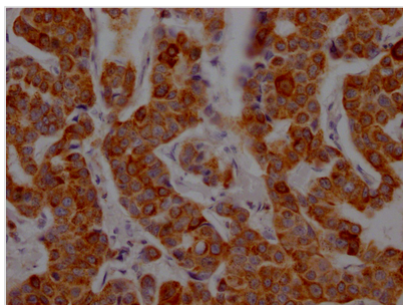
All lanes: CD8A antibody at 1:2000

Secondary

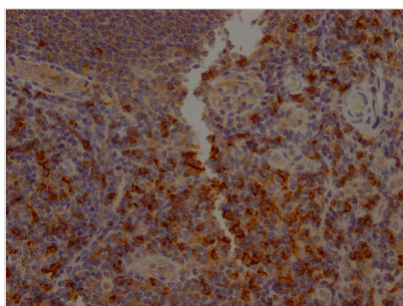
Goat polyclonal to rabbit IgG at 1/50000 dilution

Predicted band size: 26, 22, 31 kDa

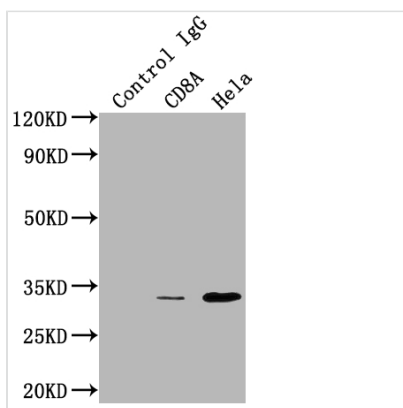
Observed band size: 31 kDa



IHC image of CSB-RA934881A0HU diluted at 1:100 and staining in paraffin-embedded human breast cancer performed on a Leica Bond™ system. After dewaxing and hydration, antigen retrieval was mediated by high pressure in a citrate buffer (pH 6.0). Section was blocked with 10% normal goat serum 30min at RT. Then primary antibody (1% BSA) was incubated at 4? overnight. The primary is detected by a Goat anti-rabbit IgG polymer labeled by HRP and visualized using 0.05% DAB.



IHC image of CSB-RA934881A0HU diluted at 1:100 and staining in paraffin-embedded human tonsil tissue performed on a Leica Bond™ system. After dewaxing and hydration, antigen retrieval was mediated by high pressure in a citrate buffer (pH 6.0). Section was blocked with 10% normal goat serum 30min at RT. Then primary antibody (1% BSA) was incubated at 4? overnight. The primary is detected by a Goat anti-rabbit IgG polymer labeled by HRP and visualized using 0.05% DAB.



Immunoprecipitating CD8A in HepG2 whole cell lysate
 Lane 1: Rabbit control IgG instead of CSB-RA934881A0HU in HepG2 whole cell lysate. For western blotting, a HRP-conjugated Protein G antibody was used as the secondary antibody (1/2000)
 Lane 2: CSB-RA934881A0HU(3μg)+ HepG2 whole cell lysate(500μg)
 Lane 3: HepG2 whole cell lysate (10μg)

Description

CUSABIO immunized an animal with a synthesized peptide derived from human CD8 to stimulate an immune response. B cells were isolated from the immunized animal and fused with myeloma cells to form hybridoma cells. A single hybridoma cell clone that produces CD8A-specific antibodies was screened and selected. RNA was extracted from the chosen hybridoma cells, and the gene sequence encoding the CD8A antibody was amplified using reverse transcription PCR. These CD8A antibody genes were then cloned into an expression vector and transfected into a host system for expression. The CD8A recombinant monoclonal antibodies were purified from the cell culture supernatant using affinity chromatography. The binding specificity and affinity of the recombinant CD8A monoclonal antibody were confirmed using four applications including ELISA, WB, IHC, and IP. This antibody specifically recognizes human CD8A protein.

Usage

For Research Use Only. Not for use in diagnostic or therapeutic procedures.