



FOXA1 Recombinant Monoclonal Antibody

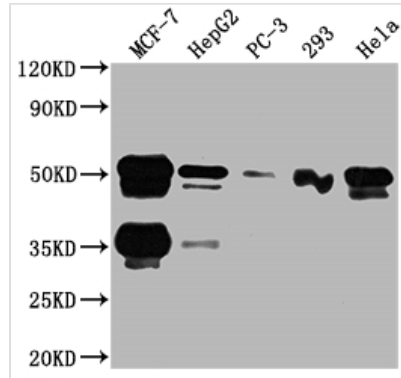
Product Code	CSB-RA246102A0HU
Storage	Upon receipt, store at -20°C or -80°C. Avoid repeated freeze.
Uniprot No.	P55317
Immunogen	A synthesized peptide derived from human FOXA1
Species Reactivity	Human
Tested Applications	ELISA, WB, IHC, IP; Recommended dilution: WB:1:500-1:5000, IHC:1:50-1:200, IP:1:200-1:1000
Relevance	<p>Transcription factor that is involved in embryonic development, establishment of tissue-specific gene expression and regulation of gene expression in differentiated tissues. Is thought to act as a 'pioneer' factor opening the compacted chromatin for other proteins through interactions with nucleosomal core histones and thereby replacing linker histones at target enhancer and/or promoter sites. Binds DNA with the consensus sequence 5'-[AC]A[AT]T[AG]TT[GT][AG][CT]T[CT]-3' (By similarity). Proposed to play a role in translating the epigenetic signatures into cell type-specific enhancer-driven transcriptional programs. Its differential recruitment to chromatin is dependent on distribution of histone H3 methylated at 'Lys-5' (H3K4me2) in estrogen-regulated genes. Involved in the development of multiple endoderm-derived organ systems such as liver, pancreas, lung and prostate; FOXA1 and FOXA2 seem to have at least in part redundant roles (By similarity). Modulates the transcriptional activity of nuclear hormone receptors. Is involved in ESR1-mediated transcription; required for ESR1 binding to the NKX2-1 promoter in breast cancer cells; binds to the RPRM promoter and is required for the estrogen-induced repression of RPRM. Involved in regulation of apoptosis by inhibiting the expression of BCL2. Involved in cell cycle regulation by activating expression of CDKN1B, alone or in conjunction with BRCA1. Originally described as a transcription activator for a number of liver genes such as AFP, albumin, tyrosine aminotransferase, PEPCK, etc. Interacts with the cis-acting regulatory regions of these genes. Involved in glucose homeostasis.</p>
Form	Liquid
Conjugate	Non-conjugated
Storage Buffer	Rabbit IgG in 10mM phosphate buffered saline , pH 7.4, 150mM sodium chloride, 0.05% BSA, 0.02% sodium azide and 50% glycerol.
Purification Method	Affinity-chromatography
Isotype	Rabbit IgG
Clonality	Monoclonal
Product Type	Recombinant Antibody
Immunogen Species	Homo sapiens (Human)
Research Area	Epigenetics and Nuclear Signaling



Target Names FOXA1

Clone No. 3B2

Image



Western Blot

Positive WB detected in: MCF-7 whole cell lysate, HepG2 whole cell lysate, PC-3 whole cell lysate, 293 whole cell lysate, HeLa whole cell lysate

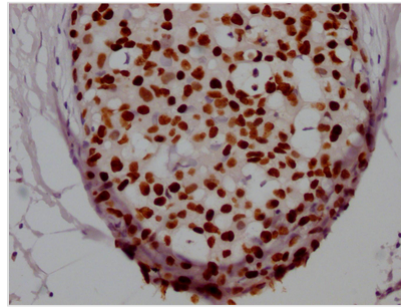
All lanes: FOXA1 antibody at 1:2000

Secondary

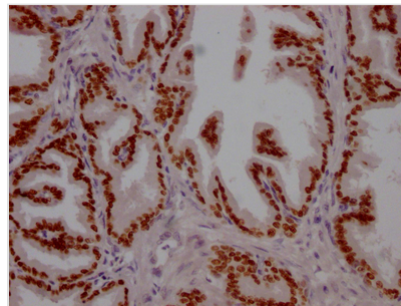
Goat polyclonal to rabbit IgG at 1/50000 dilution

Predicted band size: 50, 46 kDa

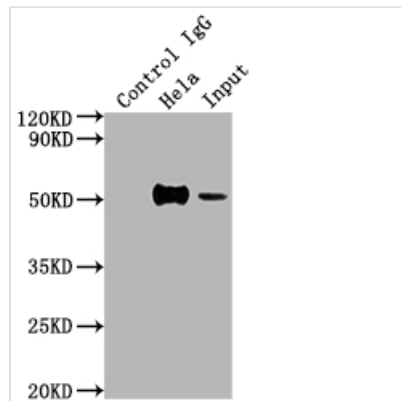
Observed band size: 50 kDa



IHC image of CSB-RA246102A0HU diluted at 1:100 and staining in paraffin-embedded human breast cancer performed on a Leica Bond™ system. After dewaxing and hydration, antigen retrieval was mediated by high pressure in a citrate buffer (pH 6.0). Section was blocked with 10% normal goat serum 30min at RT. Then primary antibody (1% BSA) was incubated at 4? overnight. The primary is detected by a Goat anti-rabbit IgG polymer labeled by HRP and visualized using 0.05% DAB.



IHC image of CSB-RA246102A0HU diluted at 1:100 and staining in paraffin-embedded human prostate tissue performed on a Leica Bond™ system. After dewaxing and hydration, antigen retrieval was mediated by high pressure in a citrate buffer (pH 6.0). Section was blocked with 10% normal goat serum 30min at RT. Then primary antibody (1% BSA) was incubated at 4? overnight. The primary is detected by a Goat anti-rabbit IgG polymer labeled by HRP and visualized using 0.05% DAB.



Immunoprecipitating FOXA1 in HeLa whole cell lysate

Lane 1: Rabbit control IgG instead of CSB-RA246102A0HU in HeLa whole cell lysate. For western blotting, a HRP-conjugated Protein G antibody was used as the secondary antibody (1/2000)

Lane 2: CSB-RA246102A0HU(2µg)+ HeLa whole cell lysate(500µg)

Lane 3: HeLa whole cell lysate (10µg)

Usage

For Research Use Only. Not for use in diagnostic or therapeutic procedures.