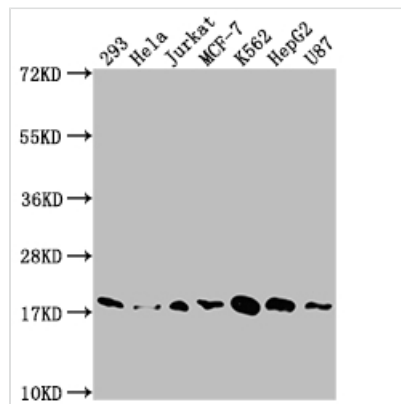




SOD1 Antibody

Product Code	CSB-RA829583A0HU
Storage	Upon receipt, store at -20°C or -80°C. Avoid repeated freeze.
Uniprot No.	P00441
Immunogen	A synthesized peptide derived from human SOD1
Species Reactivity	Human
Tested Applications	ELISA, WB, FC; Recommended dilution: WB:1:500-1:5000, FC:1:20-1:200
Relevance	Destroys radicals which are normally produced within the cells and which are toxic to biological systems.
Form	Liquid
Conjugate	Non-conjugated
Storage Buffer	Rabbit IgG in phosphate buffered saline, pH 7.4, 150mM NaCl, 0.02% sodium azide and 50% glycerol.
Purification Method	Affinity-chromatography
Isotype	Rabbit IgG
Clonality	Monoclonal
Product Type	Recombinant Antibody
Immunogen Species	Homo sapiens (Human)
Research Area	Cancer; Cell biology; Metabolism; Signal transduction
Gene Names	SOD1
Accession NO.	3E5

Image



Western Blot

Positive WB detected in: 293 whole cell lysate, HeLa whole cell lysate, Jurkat whole cell lysate, MCF-7 whole cell lysate, K562 whole cell lysate, HepG2 whole cell lysate, U87 whole cell lysate

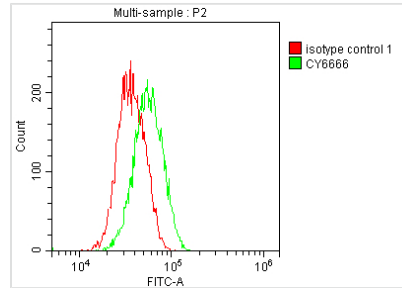
All lanes: SOD1 antibody at 1:1500

Secondary

Goat polyclonal to rabbit IgG at 1/50000 dilution

Predicted band size: 16 kDa

Observed band size: 18 kDa



Overlay histogram showing Jurkat cells stained with CSB-RA829583A0HU (red line) at 1:50. The cells were fixed with 70% Ethylalcohol (18h) and then incubated in 10% normal goat serum to block non-specific protein-protein interactions followed by the antibody ($1\mu\text{g}/1*10^6\text{cells}$) for 1 h at 4°C . The secondary antibody used was FITC-conjugated goat anti-rabbit IgG (H+L) at 1/200 dilution for 30min at 4°C . Control antibody (green line) was Rabbit IgG ($1\mu\text{g}/1*10^6\text{cells}$) used under the same conditions. Acquisition of >10,000 events was performed.