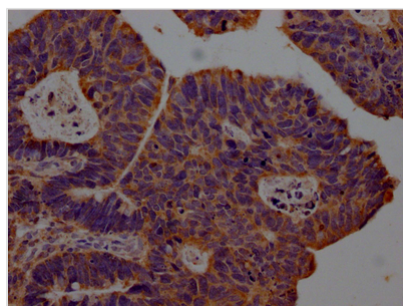




# CXCL10 Recombinant Monoclonal Antibody

<b>Product Code</b>	CSB-RA903061A0HU
<b>Storage</b>	Upon receipt, store at -20°C or -80°C. Avoid repeated freeze.
<b>Uniprot No.</b>	P02778
<b>Immunogen</b>	A synthesized peptide derived from human IP10
<b>Species Reactivity</b>	Human
<b>Tested Applications</b>	ELISA, IHC; Recommended dilution: IHC:1:50-1:200
<b>Relevance</b>	Chemotactic for monocytes and T-lymphocytes. Binds to CXCR3.
<b>Form</b>	Liquid
<b>Conjugate</b>	Non-conjugated
<b>Storage Buffer</b>	Rabbit IgG in phosphate buffered saline, pH 7.4, 150mM NaCl, 0.02% sodium azide and 50% glycerol.
<b>Purification Method</b>	Affinity-chromatography
<b>Isotype</b>	Rabbit IgG
<b>Clonality</b>	Monoclonal
<b>Product Type</b>	Recombinant Antibody
<b>Immunogen Species</b>	Homo sapiens (Human)
<b>Research Area</b>	Cancer; Immunology
<b>Gene Names</b>	CXCL10
<b>Clone No.</b>	5C7

## Image



IHC image of CSB-RA903061A0HU diluted at 1:100 and staining in paraffin-embedded human ovarian cancer performed on a Leica Bond<sup>TM</sup> system. After dewaxing and hydration, antigen retrieval was mediated by high pressure in a citrate buffer (pH 6.0). Section was blocked with 10% normal goat serum 30min at RT. Then primary antibody (1% BSA) was incubated at 4? overnight. The primary is detected by a Goat anti-rabbit IgG polymer labeled by HRP and visualized using 0.05% DAB.

## Description

CXCL10 has been associated with a wide range of lung inflammatory diseases through both pro- and antifibrotic effects and its ability to recruit cells that secrete or respond to IFN- $\gamma$ . During mouse coxsackievirus infection, CXCL10 is required for NK cell recruitment to the heart and viral replication limitation. Elevated CXCL10 levels in the early stages of this infection are linked to a lower virus titer and better cardiac function. It also plays an important role in arthritis-related joint inflammation and bone loss.



The recombinant CXCL10 antibody was generated in vitro through inserting cloned CXCL10 genes into expression vectors. The expression vector was then inserted into a mammalian cell to express this CXCL10 antibody. It has been validated in ELISA, IHC. Every step in the production was controlled strictly. You have no worries about the quality.