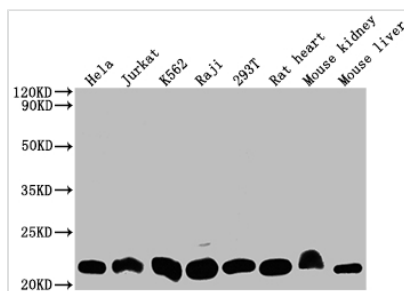




# DHFR Recombinant Monoclonal Antibody

<b>Product Code</b>	CSB-RA264582A0HU
<b>Storage</b>	Upon receipt, store at -20°C or -80°C. Avoid repeated freeze.
<b>Uniprot No.</b>	P00374
<b>Immunogen</b>	A synthesized peptide derived from human DHFR
<b>Species Reactivity</b>	Human, Mouse, Rat
<b>Tested Applications</b>	ELISA, WB, IHC, IP; Recommended dilution: WB:1:500-1:5000, IHC:1:50-1:200, IP:1:200-1:1000
<b>Relevance</b>	Key enzyme in folate metabolism. Contributes to the de novo mitochondrial thymidylate biosynthesis pathway. Catalyzes an essential reaction for de novo glycine and purine synthesis, and for DNA precursor synthesis. Binds its own mRNA and that of DHFR2.
<b>Form</b>	Liquid
<b>Conjugate</b>	Non-conjugated
<b>Storage Buffer</b>	Rabbit IgG in 10mM phosphate buffered saline , pH 7.4, 150mM sodium chloride, 0.05% BSA, 0.02% sodium azide and 50% glycerol.
<b>Purification Method</b>	Affinity-chromatography
<b>Isotype</b>	Rabbit IgG
<b>Clonality</b>	Monoclonal
<b>Product Type</b>	Recombinant Antibody
<b>Immunogen Species</b>	Homo sapiens (Human)
<b>Research Area</b>	Cancer; Cell biology; Metabolism; Signal transduction
<b>Target Names</b>	DHFR
<b>Clone No.</b>	9B2

## Image



### Western Blot

Positive WB detected in: HeLa whole cell lysate, Jurkat whole cell lysate, K562 whole cell lysate, Raji whole cell lysate, 293T whole cell lysate, Rat heart tissue, Mouse kidney tissue, Mouse liver tissue

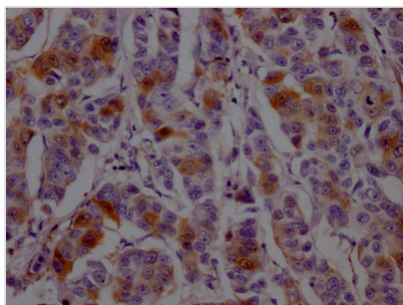
All lanes: DHFR antibody at 1:2000

Secondary

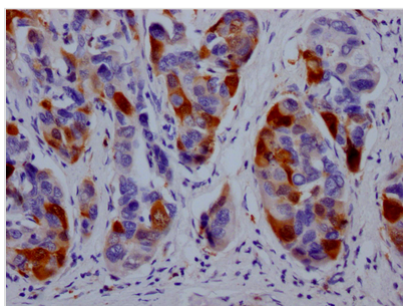
Goat polyclonal to rabbit IgG at 1/50000 dilution

Predicted band size: 22, 16 kDa

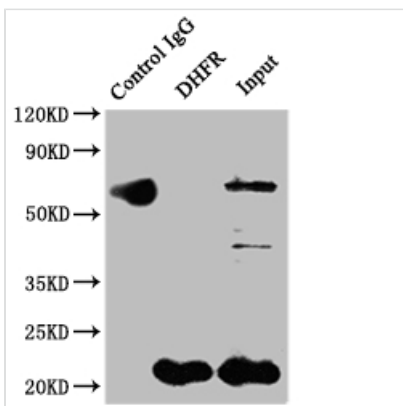
Observed band size: 22 kDa



IHC image of CSB-RA264582A0HU diluted at 1:100 and staining in paraffin-embedded human breast cancer performed on a Leica Bond™ system. After dewaxing and hydration, antigen retrieval was mediated by high pressure in a citrate buffer (pH 6.0). Section was blocked with 10% normal goat serum 30min at RT. Then primary antibody (1% BSA) was incubated at 4? overnight. The primary is detected by a Goat anti-rabbit IgG polymer labeled by HRP and visualized using 0.05% DAB.



IHC image of CSB-RA264582A0HU diluted at 1:100 and staining in paraffin-embedded human liver cancer performed on a Leica Bond™ system. After dewaxing and hydration, antigen retrieval was mediated by high pressure in a citrate buffer (pH 6.0). Section was blocked with 10% normal goat serum 30min at RT. Then primary antibody (1% BSA) was incubated at 4? overnight. The primary is detected by a Goat anti-rabbit IgG polymer labeled by HRP and visualized using 0.05% DAB.



Immunoprecipitating DHFR in HeLa whole cell lysate  
 Lane 1: Rabbit control IgG instead of CSB-RA264582A0HU in HeLa whole cell lysate. For western blotting, a HRP-conjugated Protein G antibody was used as the secondary antibody (1/2000)  
 Lane 2: CSB-RA264582A0HU(2µg)+ HeLa whole cell lysate(500µg)  
 Lane 3: HeLa whole cell lysate (10µg)

**Usage**

For Research Use Only. Not for use in diagnostic or therapeutic procedures.