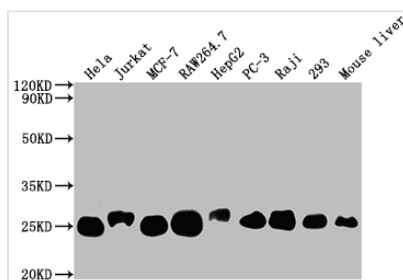




TPT1 Recombinant Monoclonal Antibody

Product Code	CSB-RA214107A0HU
Storage	Upon receipt, store at -20°C or -80°C. Avoid repeated freeze.
Uniprot No.	P13693
Immunogen	A synthesized peptide derived from human TCTP
Species Reactivity	Human, Mouse
Tested Applications	ELISA, WB, IHC, IF, IP; Recommended dilution: WB:1:500-1:5000, IHC:1:50-1:200, IF:1:20-1:200, IP:1:200-1:1000
Relevance	Involved in calcium binding and microtubule stabilization.
Form	Liquid
Conjugate	Non-conjugated
Storage Buffer	Rabbit IgG in 10mM phosphate buffered saline , pH 7.4, 150mM sodium chloride, 0.05% BSA, 0.02% sodium azide and 50% glycerol.
Purification Method	Affinity-chromatography
Isotype	Rabbit IgG
Clonality	Monoclonal
Product Type	Recombinant Antibody
Immunogen Species	Homo sapiens (Human)
Research Area	Immunology
Target Names	TPT1
Clone No.	10A9

Image

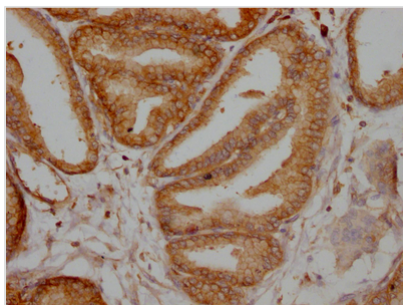


Western Blot

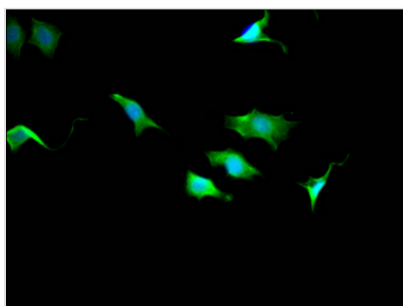
Positive WB detected in: HeLa whole cell lysate, Jurkat whole cell lysate, MCF-7 whole cell lysate, RAW264.7 whole cell lysate, HepG2 whole cell lysate, PC-3 whole cell lysate, Raji whole cell lysate, 293 whole cell lysate, Mouse liver tissue
All lanes: TPT1 antibody at 1:2000

Secondary

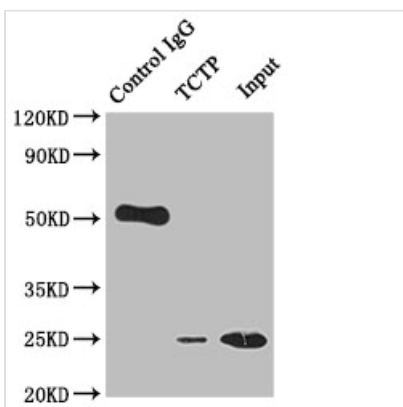
Goat polyclonal to rabbit IgG at 1/50000 dilution
Predicted band size: 20, 16 kDa
Observed band size: 25 kDa



IHC image of CSB-RA214107A0HU diluted at 1:100 and staining in paraffin-embedded human prostate tissue performed on a Leica Bond™ system. After dewaxing and hydration, antigen retrieval was mediated by high pressure in a citrate buffer (pH 6.0). Section was blocked with 10% normal goat serum 30min at RT. Then primary antibody (1% BSA) was incubated at 4? overnight. The primary is detected by a Goat anti-rabbit IgG polymer labeled by HRP and visualized using 0.05% DAB.



Immunofluorescence staining of SY5Y Cells with CSB-RA214107A0HU at 1:50, counter-stained with DAPI. The cells were fixed in 4% formaldehyde, permeated by 0.2% TritonX-100, and blocked in 10% normal Goat Serum. The cells were then incubated with the antibody overnight at 4?. Nuclear DNA was labeled in blue with DAPI. The secondary antibody was FITC-conjugated AffiniPure Goat Anti-Rabbit IgG (H+L).



Immunoprecipitating TCTP in HeLa whole cell lysate
 Lane 1: Rabbit control IgG instead of CSB-RA214107A0HU in HeLa whole cell lysate. For western blotting, a HRP-conjugated Protein G antibody was used as the secondary antibody (1/2000)
 Lane 2: CSB-RA214107A0HU(2µg)+ HeLa whole cell lysate(500µg)
 Lane 3: HeLa whole cell lysate (10µg)

Usage

For Research Use Only. Not for use in diagnostic or therapeutic procedures.