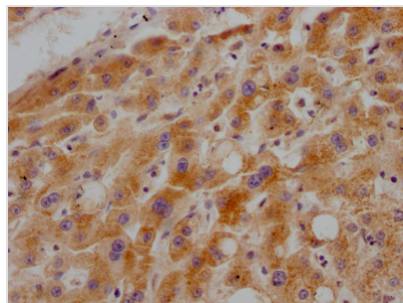




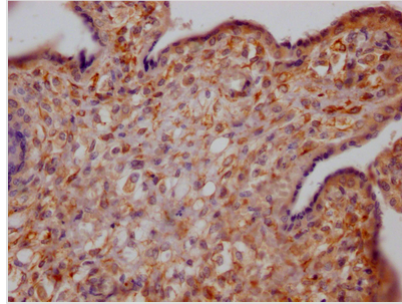
# GHR Recombinant Monoclonal Antibody

<b>Product Code</b>	CSB-RA978909A0HU
<b>Storage</b>	Upon receipt, store at -20°C or -80°C. Avoid repeated freeze.
<b>Uniprot No.</b>	P10912
<b>Immunogen</b>	A synthesized peptide derived from human Growth hormone receptor
<b>Species Reactivity</b>	Human
<b>Tested Applications</b>	ELISA, IHC, IF; Recommended dilution: IHC:1:50-1:200, IF:1:20-1:200
<b>Relevance</b>	Receptor for pituitary gland growth hormone involved in regulating postnatal body growth. On ligand binding, couples to the JAK2/STAT5 pathway (By similarity).
<b>Form</b>	Liquid
<b>Conjugate</b>	Non-conjugated
<b>Storage Buffer</b>	Rabbit IgG in phosphate buffered saline, pH 7.4, 150mM NaCl, 0.02% sodium azide and 50% glycerol.
<b>Purification Method</b>	Affinity-chromatography
<b>Isotype</b>	Rabbit IgG
<b>Clonality</b>	Monoclonal
<b>Product Type</b>	Recombinant Antibody
<b>Immunogen Species</b>	Homo sapiens (Human)
<b>Research Area</b>	Cell biology; Developmental biology; Signal transduction
<b>Gene Names</b>	GHR
<b>Clone No.</b>	10C11

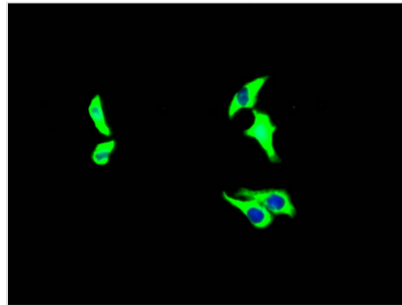
## Image



IHC image of CSB-RA978909A0HU diluted at 1:100 and staining in paraffin-embedded human liver tissue performed on a Leica Bond<sup>TM</sup> system. After dewaxing and hydration, antigen retrieval was mediated by high pressure in a citrate buffer (pH 6.0). Section was blocked with 10% normal goat serum 30min at RT. Then primary antibody (1% BSA) was incubated at 4°C overnight. The primary is detected by a Goat anti-rabbit IgG polymer labeled by HRP and visualized using 0.05% DAB.



IHC image of CSB-RA978909A0HU diluted at 1:100 and staining in paraffin-embedded human placenta tissue performed on a Leica Bond™ system. After dewaxing and hydration, antigen retrieval was mediated by high pressure in a citrate buffer (pH 6.0). Section was blocked with 10% normal goat serum 30min at RT. Then primary antibody (1% BSA) was incubated at 4°C overnight. The primary is detected by a Goat anti-rabbit IgG polymer labeled by HRP and visualized using 0.05% DAB.



Immunofluorescence staining of HepG2 Cells with CSB-RA978909A0HU at 1:50, counter-stained with DAPI. The cells were fixed in 4% formaldehyde and blocked in 10% normal Goat Serum. The cells were then incubated with the antibody overnight at 4°C. Nuclear DNA was labeled in blue with DAPI. The secondary antibody was FITC-conjugated AffiniPure Goat Anti-Rabbit IgG (H+L).

## Description

GHR antibody CSB-RA978909A0HU is a recombinant monoclonal antibody produced from the expression of the plasmids that were constructed by the GHR monoclonal antibody (generated from animals with the human GHR synthesized peptide immunization) DNA sequence in cell lines. This GHR recombinant antibody is a rabbit IgG antibody purified using the affinity-chromatography method. It is reactive with the GHR protein from human samples. And it can be applied in ELISA, IHC, and WB analyses.

Antibodies against GHR, especially monoclonal antibodies, have become important tools to study this receptor. The high-affinity MAb 263 directed against the extracellular domain (ECD) of GHR has been extensively applied for localization of the GHR by immunohistochemistry in many species and makes up an essential part of the ligand immunofunctional assay.