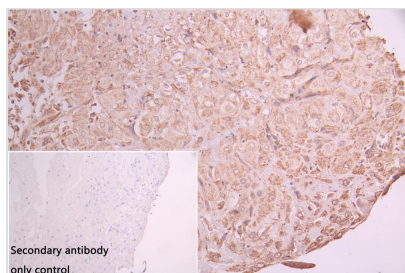




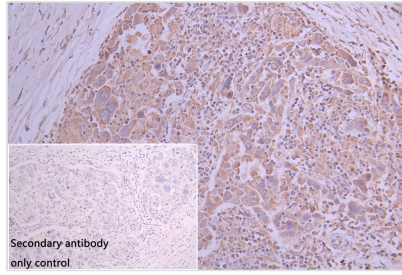
ANGPT2 Recombinant Monoclonal Antibody

Product Code	CSB-RA191985A0HU
Storage	Upon receipt, store at -20°C or -80°C. Avoid repeated freeze.
Uniprot No.	O15123
Immunogen	A synthesized peptide derived from human Angiopoietin 2
Species Reactivity	Human,Mouse,Rat
Tested Applications	ELISA, WB,IHC; Recommended dilution:WB:1:500-1:2000, IHC:1:50-1:200
Relevance	Binds to TEK/TIE2, competing for the ANGPT1 binding site, and modulating ANGPT1 signaling. Can induce tyrosine phosphorylation of TEK/TIE2 in the absence of ANGPT1. In the absence of angiogenic inducers, such as VEGF, ANGPT2-mediated loosening of cell-matrix contacts may induce endothelial cell apoptosis with consequent vascular regression. In concert with VEGF, it may facilitate endothelial cell migration and proliferation, thus serving as a permissive angiogenic signal.
Form	Liquid
Conjugate	Non-conjugated
Storage Buffer	Rabbit IgG in 10mM phosphate buffered saline , pH 7.4, 150mM sodium chloride, 0.05% BSA, 0.02% sodium azide and 50% glycerol.
Purification Method	Affinity-chromatography
Isotype	Rabbit IgG
Clonality	Monoclonal
Product Type	Recombinant Antibody
Immunogen Species	Homo sapiens (Human)
Research Area	Cardiovascular
Target Names	ANGPT2
Clone No.	1F10

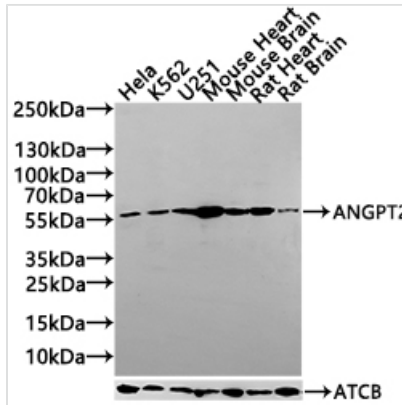
Image



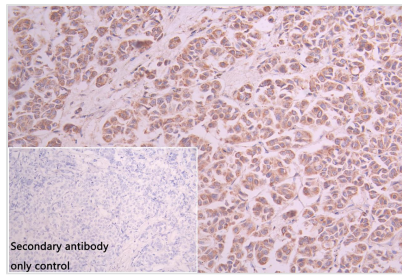
IHC image of CSB-RA191985A0HU diluted at 1:100 and staining in paraffin-embedded human liver cancer performed on a Leica Bond™ system. After dewaxing and hydration, antigen retrieval was mediated by high pressure in a citrate buffer (pH 6.0). Section was blocked with 10% normal goat serum 30min at RT. Then primary antibody (1% BSA) was incubated at 4? overnight. The primary is detected by a Goat anti-rabbit IgG polymer labeled by HRP and visualized using 0.05% DAB.



IHC image of CSB-RA191985A0HU diluted at 1:50 and staining in paraffin-embedded human Liver cancer performed on a Leica Bond™ system. After dewaxing and hydration, antigen retrieval was mediated by high pressure in a citrate buffer (pH 6.0). Section was blocked with 10% normal goat serum 30min at RT. Then primary antibody (1% BSA) was incubated at 4°C overnight. The primary is detected by a Goat anti-rabbit polymer IgG labeled by HRP and visualized using 0.05% DAB. Secondary antibody only control: uses 1% BSA instead of primary antibody



Western Blot
 Positive WB detected in: HeLa whole cell lysate(30µg), K562 whole cell lysate(30µg), U251 whole cell lysate(30µg), Mouse Heart tissue lysate(30µg), Mouse Brain tissue lysate(30µg), Rat Heart tissue lysate(30µg), Rat Brain tissue lysate(30µg)
 All lanes: ANGPT2 antibody at 1:1000
 Secondary
 Goat polyclonal to rabbit IgG at 1/20000 dilution
 Predicted band size: 57 kDa
 Observed band size: 57 kDa
 Exposure time: 120s



IHC image of CSB-RA191985A0HU diluted at 1:50 and staining in paraffin-embedded human breast cancer performed on a Leica Bond™ system. After dewaxing and hydration, antigen retrieval was mediated by high pressure in a citrate buffer (pH 6.0). Section was blocked with 10% normal goat serum 30min at RT. Then primary antibody (1% BSA) was incubated at 4°C overnight. The primary is detected by a Goat anti-rabbit polymer IgG labeled by HRP and visualized using 0.05% DAB. Secondary antibody only control: uses 1% BSA instead of primary antibody

Usage

For Research Use Only. Not for use in diagnostic or therapeutic procedures.