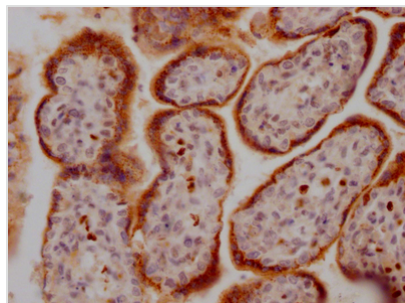




# GDF15 Recombinant Monoclonal Antibody

<b>Product Code</b>	CSB-RA285852A0HU
<b>Storage</b>	Upon receipt, store at -20°C or -80°C. Avoid repeated freeze.
<b>Uniprot No.</b>	Q99988
<b>Immunogen</b>	A synthesized peptide derived from human GDF15
<b>Species Reactivity</b>	Human
<b>Tested Applications</b>	ELISA, IHC; Recommended dilution: IHC:1:50-1:200
<b>Relevance</b>	cytoplasm, extracellular exosome, extracellular region, extracellular space, nucleus, cytokine activity, transforming growth factor beta receptor binding, BMP signaling pathway, cell development, cell-cell signaling
<b>Form</b>	Liquid
<b>Conjugate</b>	Non-conjugated
<b>Storage Buffer</b>	Rabbit IgG in 10mM phosphate buffered saline , pH 7.4, 150mM sodium chloride, 0.05% BSA, 0.02% sodium azide and 50% glycerol.
<b>Purification Method</b>	Affinity-chromatography
<b>Isotype</b>	Rabbit IgG
<b>Clonality</b>	Monoclonal
<b>Product Type</b>	Recombinant Antibody
<b>Immunogen Species</b>	Homo sapiens (Human)
<b>Research Area</b>	Cardiovascular; Cell biology; Signal transduction
<b>Target Names</b>	GDF15
<b>Clone No.</b>	8E5

## Image



IHC image of CSB-RA285852A0HU diluted at 1:100 and staining in paraffin-embedded human placenta tissue performed on a Leica Bond™ system. After dewaxing and hydration, antigen retrieval was mediated by high pressure in a citrate buffer (pH 6.0). Section was blocked with 10% normal goat serum 30min at RT. Then primary antibody (1% BSA) was incubated at 4? overnight. The primary is detected by a Goat anti-rabbit IgG polymer labeled by HRP and visualized using 0.05% DAB.

**Usage** For Research Use Only. Not for use in diagnostic or therapeutic procedures.