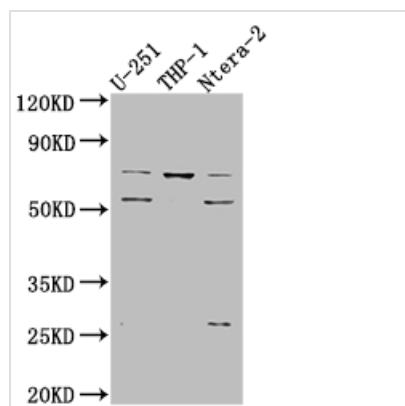




# PTH1R Recombinant Monoclonal Antibody

<b>Product Code</b>	CSB-RA162005A0HU
<b>Storage</b>	Upon receipt, store at -20°C or -80°C. Avoid repeated freeze.
<b>Uniprot No.</b>	Q03431
<b>Immunogen</b>	A synthesized peptide derived from human Parathyroid Hormone Receptor 1
<b>Species Reactivity</b>	Human
<b>Tested Applications</b>	ELISA, WB; Recommended dilution: WB:1:500-1:5000
<b>Relevance</b>	Receptor for parathyroid hormone and for parathyroid hormone-related peptide. The activity of this receptor is mediated by G proteins which activate adenylyl cyclase and also a phosphatidylinositol-calcium second messenger system.
<b>Form</b>	Liquid
<b>Conjugate</b>	Non-conjugated
<b>Storage Buffer</b>	Rabbit IgG in 10mM phosphate buffered saline , pH 7.4, 150mM sodium chloride, 0.05% BSA, 0.02% sodium azide and 50% glycerol.
<b>Purification Method</b>	Affinity-chromatography
<b>Isotype</b>	Rabbit IgG
<b>Clonality</b>	Monoclonal
<b>Product Type</b>	Recombinant Antibody
<b>Immunogen Species</b>	Homo sapiens (Human)
<b>Research Area</b>	Neuroscience; Signal transduction
<b>Target Names</b>	PTH1R
<b>Clone No.</b>	1G7

## Image



### Western Blot

Positive WB detected in: U-251 whole cell lysate, THP-1 whole cell lysate, Ntera-2 whole cell lysate

All lanes: PTH1R antibody at 1:1000

Secondary

Goat polyclonal to rabbit IgG at 1/50000 dilution

Predicted band size: 67 kDa

Observed band size: 72, 55 kDa

## Usage

For Research Use Only. Not for use in diagnostic or therapeutic procedures.