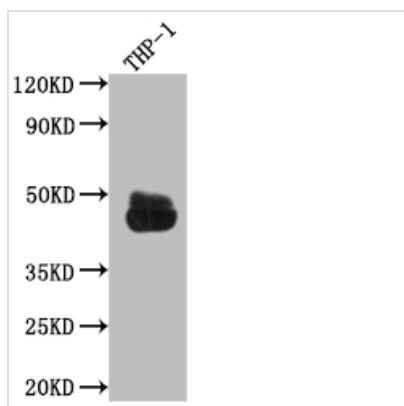




# FCGR2A Recombinant Monoclonal Antibody

|                            |                                                                                                                                                                                                                |
|----------------------------|----------------------------------------------------------------------------------------------------------------------------------------------------------------------------------------------------------------|
| <b>Product Code</b>        | CSB-RA163349A0HU                                                                                                                                                                                               |
| <b>Storage</b>             | Upon receipt, store at -20°C or -80°C. Avoid repeated freeze.                                                                                                                                                  |
| <b>Uniprot No.</b>         | P12318                                                                                                                                                                                                         |
| <b>Immunogen</b>           | A synthesized peptide derived from human CD32                                                                                                                                                                  |
| <b>Species Reactivity</b>  | Human                                                                                                                                                                                                          |
| <b>Tested Applications</b> | ELISA, WB; Recommended dilution: WB:1:500-1:5000                                                                                                                                                               |
| <b>Relevance</b>           | Binds to the Fc region of immunoglobulins gamma. Low affinity receptor. By binding to IgG it initiates cellular responses against pathogens and soluble antigens. Promotes phagocytosis of opsonized antigens. |
| <b>Form</b>                | Liquid                                                                                                                                                                                                         |
| <b>Conjugate</b>           | Non-conjugated                                                                                                                                                                                                 |
| <b>Storage Buffer</b>      | Rabbit IgG in 10mM phosphate buffered saline , pH 7.4, 150mM sodium chloride, 0.05% BSA, 0.02% sodium azide and 50% glycerol.                                                                                  |
| <b>Purification Method</b> | Affinity-chromatography                                                                                                                                                                                        |
| <b>Isotype</b>             | Rabbit IgG                                                                                                                                                                                                     |
| <b>Clonality</b>           | Monoclonal                                                                                                                                                                                                     |
| <b>Product Type</b>        | Recombinant Antibody                                                                                                                                                                                           |
| <b>Immunogen Species</b>   | Homo sapiens (Human)                                                                                                                                                                                           |
| <b>Research Area</b>       | Immunology; Stem cells                                                                                                                                                                                         |
| <b>Target Names</b>        | FCGR2A                                                                                                                                                                                                         |
| <b>Clone No.</b>           | 3B6                                                                                                                                                                                                            |

## Image



### Western Blot

Positive WB detected in: THP-1 whole cell lysate

All lanes: CD32 antibody at 1:1000

Secondary

Goat polyclonal to rabbit IgG at 1/50000 dilution

Predicted band size: 35, 36 kDa

Observed band size: 45 kDa

## Usage

For Research Use Only. Not for use in diagnostic or therapeutic procedures.