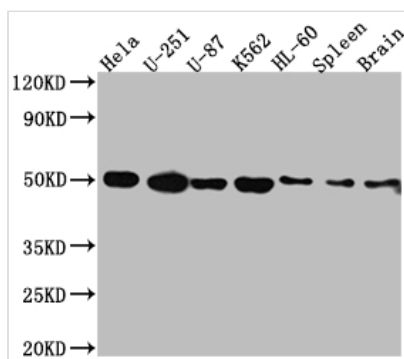




DRD3 Recombinant Monoclonal Antibody

Product Code	CSB-RA929304A0HU
Storage	Upon receipt, store at -20°C or -80°C. Avoid repeated freeze.
Uniprot No.	P35462
Immunogen	A synthesized peptide derived from human Dopamine Receptor D3
Species Reactivity	Human, Rat
Tested Applications	ELISA, WB; Recommended dilution: WB:1:500-1:5000
Relevance	Dopamine receptor whose activity is mediated by G proteins which inhibit adenylyl cyclase. Promotes cell proliferation.
Form	Liquid
Conjugate	Non-conjugated
Storage Buffer	Rabbit IgG in 10mM phosphate buffered saline , pH 7.4, 150mM sodium chloride, 0.05% BSA, 0.02% sodium azide and 50% glycerol.
Purification Method	Affinity-chromatography
Isotype	Rabbit IgG
Clonality	Monoclonal
Product Type	Recombinant Antibody
Immunogen Species	Homo sapiens (Human)
Research Area	Neuroscience
Target Names	DRD3
Clone No.	5B10

Image



Western Blot

Positive WB detected in: HeLa whole cell lysate, U-251 whole cell lysate, U-87 whole cell lysate, K562 whole cell lysate, HL-60 whole cell lysate, Rat Spleen whole cell lysate, Rat Brain whole cell lysate

All lanes: Dopamine Receptor D3 antibody at 1:1000

Secondary

Goat polyclonal to rabbit IgG at 1/50000 dilution

Predicted band size: 45, 41 kDa

Observed band size: 50 kDa

Usage

For Research Use Only. Not for use in diagnostic or therapeutic procedures.